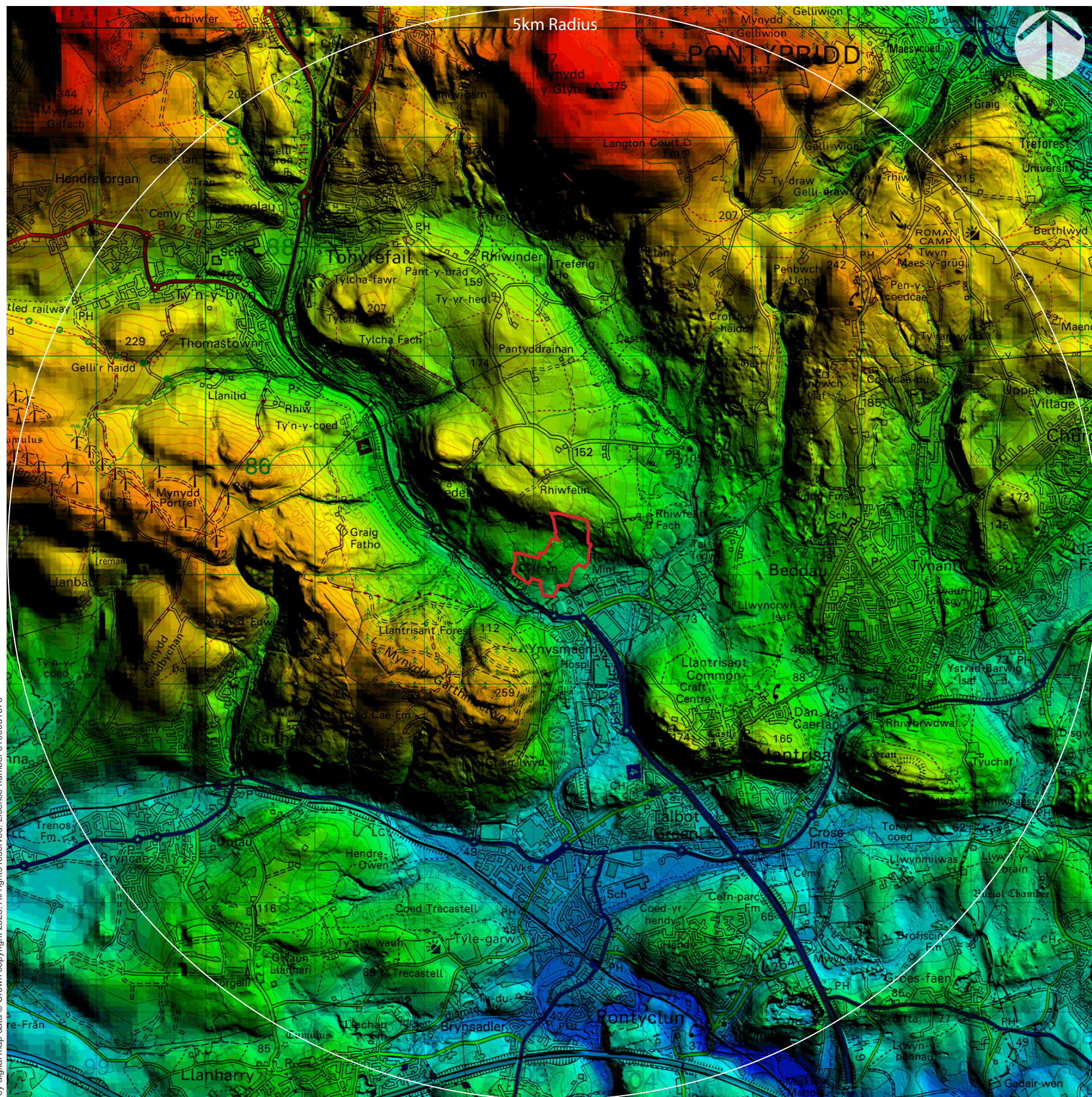


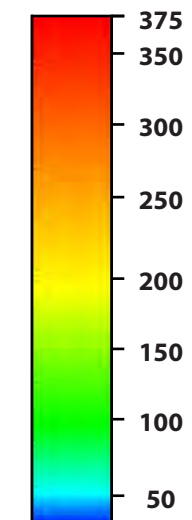
Reproduced from Ordnance Survey digital map data © Crown copyright 2025. All rights reserved. Licence number 0100031673



**Key:**



Site Location



metres  
Above  
Ordnance  
Datum  
m(AOD)

**Layout Information**

The terrain data used EA LIDAR 2m DTM.



**Landform**

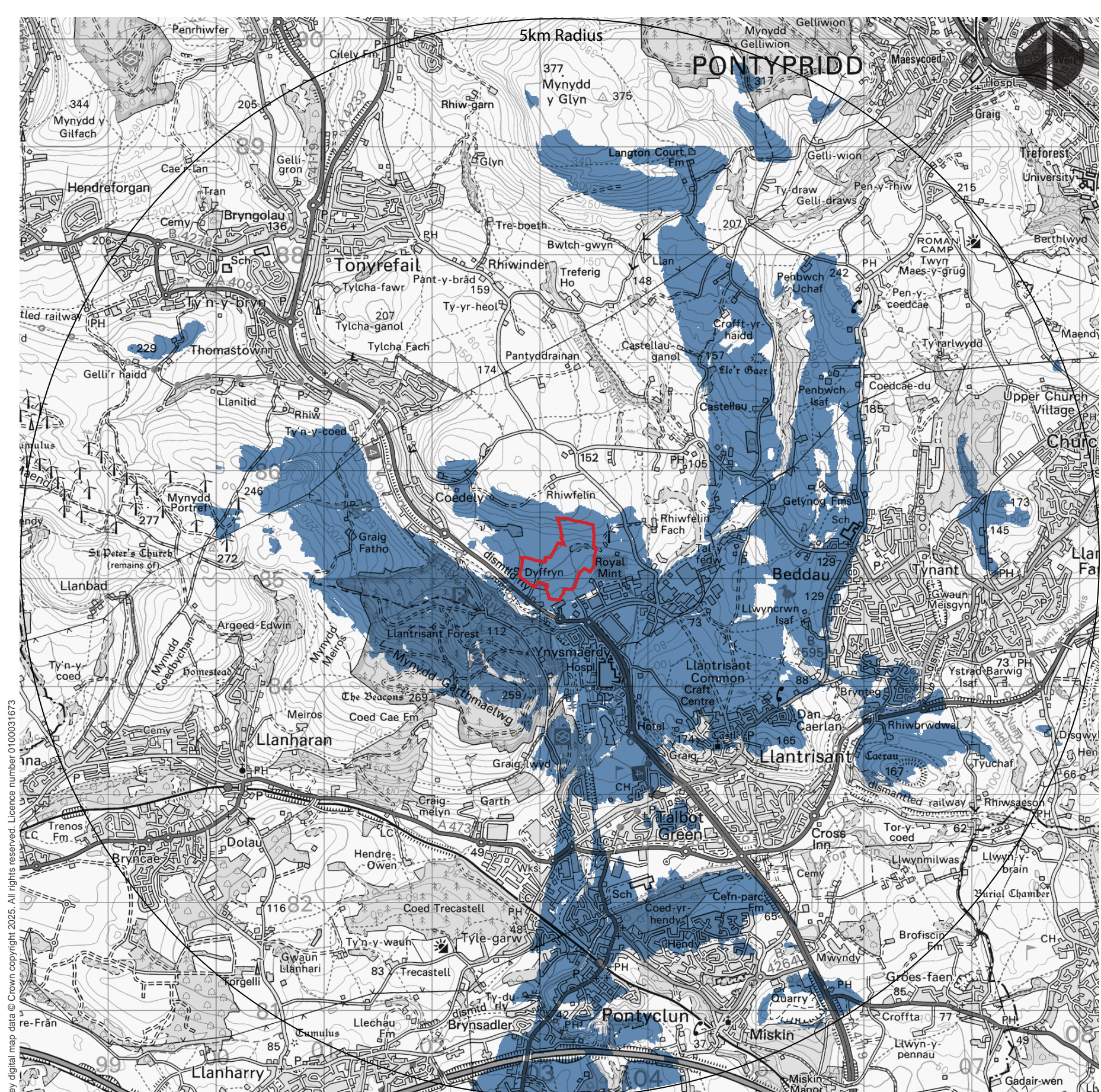
# Ely Valley Solar Farm, Llantrisant

Landscape and Visual Impact Assessment







Reproduced from Ordnance Survey digital map data © Crown copyright 2025. All rights reserved. Licence number 0100031673



Key:

-  Site Location
-  Theoretical visibility

Layout Information

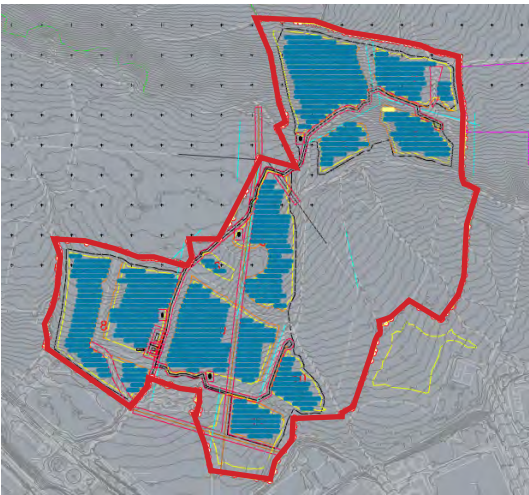
The terrain data used EA LIDAR 2m DTM.

Viewer height used in calculation 1.60m.

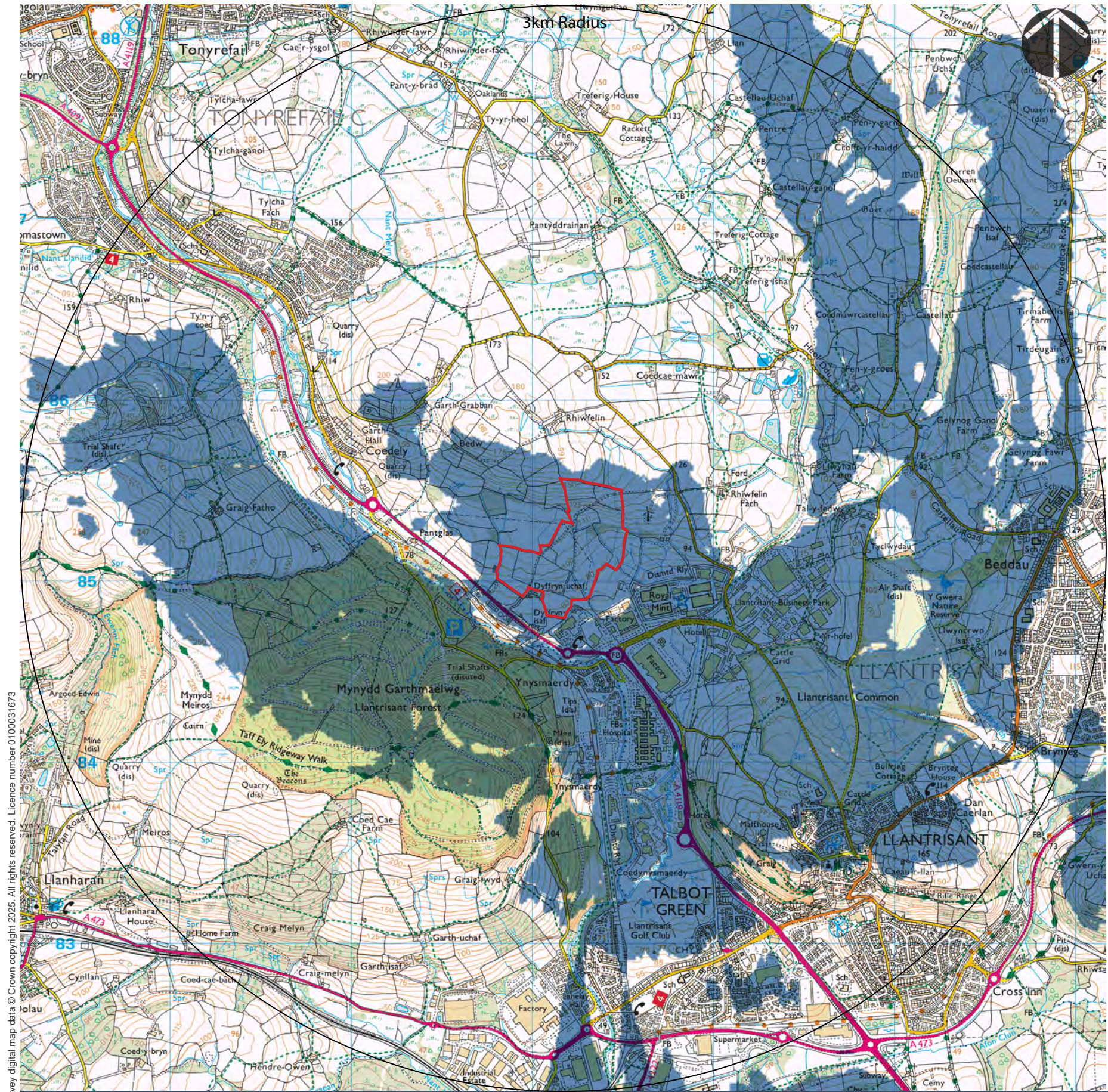
The site consists of a 2m solar panels above existing ground levels. 300 Target Points spread evenly across the solar farm location.

This ZTV does not include the screening effects of buildings or vegetation in the study area.



The calculation takes into account the effects of the curvature of the earth and light refraction. The calculation does not use mathematically approximate methods.







Key:

-  Site Location
-  Theoretical visibility

Layout Information

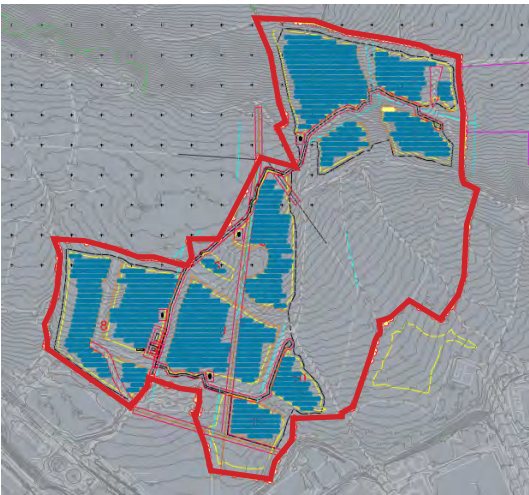
The terrain data used EA LIDAR 2m DTM.

Viewer height used in calculation 1.60m.

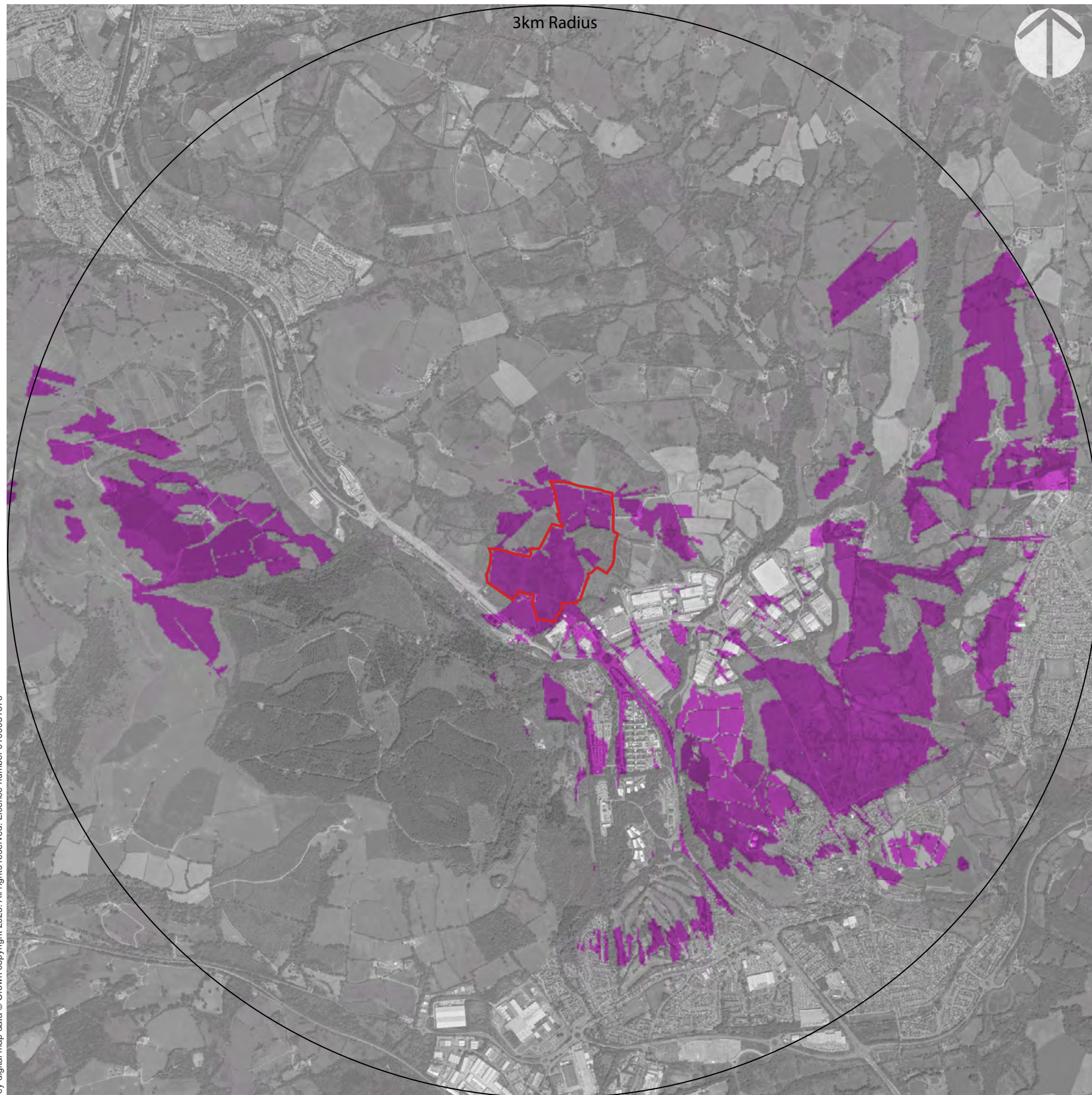
The site consists of a 2m solar panels above existing ground levels. 300 Target Points spread evenly across the solar farm location.

This ZTV does not include the screening effects of buildings or vegetation in the study area.

The calculation takes into account the effects of the curvature of the earth and light refraction. The calculation does not use mathematically approximate methods.







**Key:**



Site Location



Theoretical visibility

**Layout Information**

The terrain data used EA LIDAR 2m DTM.

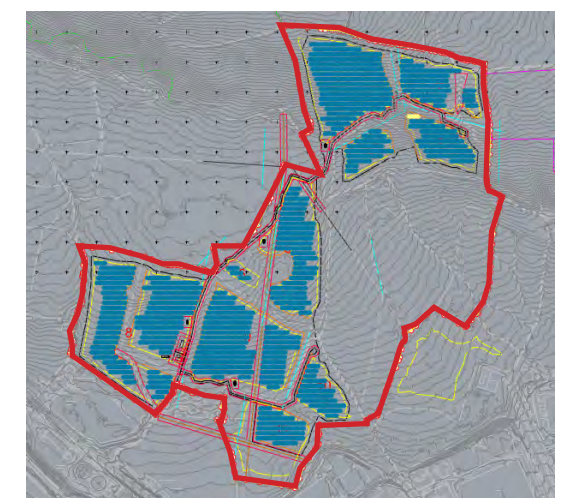
Viewer height used in calculation 1.60m.

The site consists of a 2m solar panels above existing ground levels. 300 Target Points spread evenly across the solar farm location.

This ZTV includes the screening effects of buildings in the study area.

Buildings 9m  
Woodland 12m  
Hedgerows 2m  
Unmanaged Hedgerows 5m

The calculation takes into account the effects of the curvature of the earth and light refraction. The calculation does not use mathematically approximate methods.

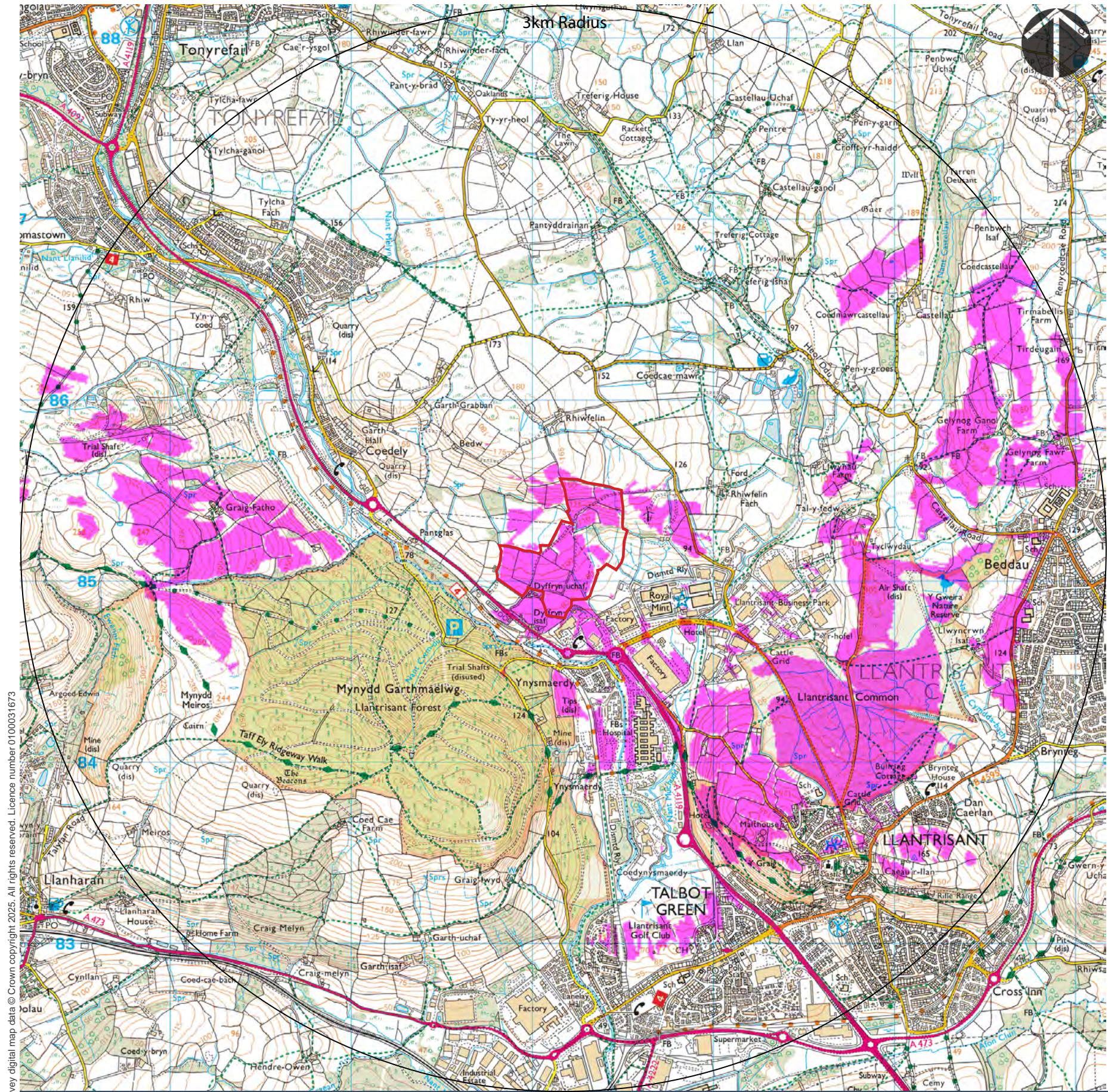


Zone of Visual Influence - Visual Buffers Calculation



**Ely Valley Solar Farm, Llantrisant**  
Landscape and Visual Impact Assessment







Key:

-  Site Location
-  Theoretical visibility

Layout Information

The terrain data used EA LIDAR 2m DTM.

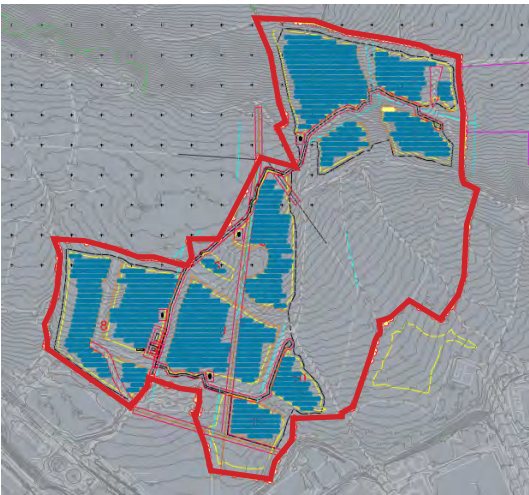
Viewer height used in calculation 1.60m.

The site consists of a 2m solar panels above existing ground levels. 300 Target Points spread evenly across the solar farm location.

This ZTV includes the screening effects of buildings in the study area.

Buildings 9m  
Woodland 12m  
Hedgerows 2m  
Unmanaged Hedgerows 5m


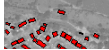



The calculation takes into account the effects of the curvature of the earth and light refraction. The calculation does not use mathematically approximate methods.







#### Key:

-  Site Location
-  Buildings (9m)
-  Hedgerows (2m)
-  Unmanaged Hedgerows (5m)
-  Woodland (12m)

#### Layout Information

The terrain data used DEFRA LIDAR 2m DTM.

Viewer height used in calculation 1.60m.

The site consists of a 2m solar panels above existing ground levels.  
300 Target Points spread evenly across the solar farm location.

Shapefiles digitised from Hi Res aerial photography.

This is a GIS calculation using Industry Standard software.

300 Target Points:



Zone of Visual Influence - Target Points and Shapefiles used in Visual Buffers Calculation

**Ely Valley Solar Farm, Llantrisant**  
Landscape and Visual Impact Assessment

