

# Ely Valley EcIA - Accompanying Material

## EcIA report figures



Figure 1. Proposal site boundary and field numbers



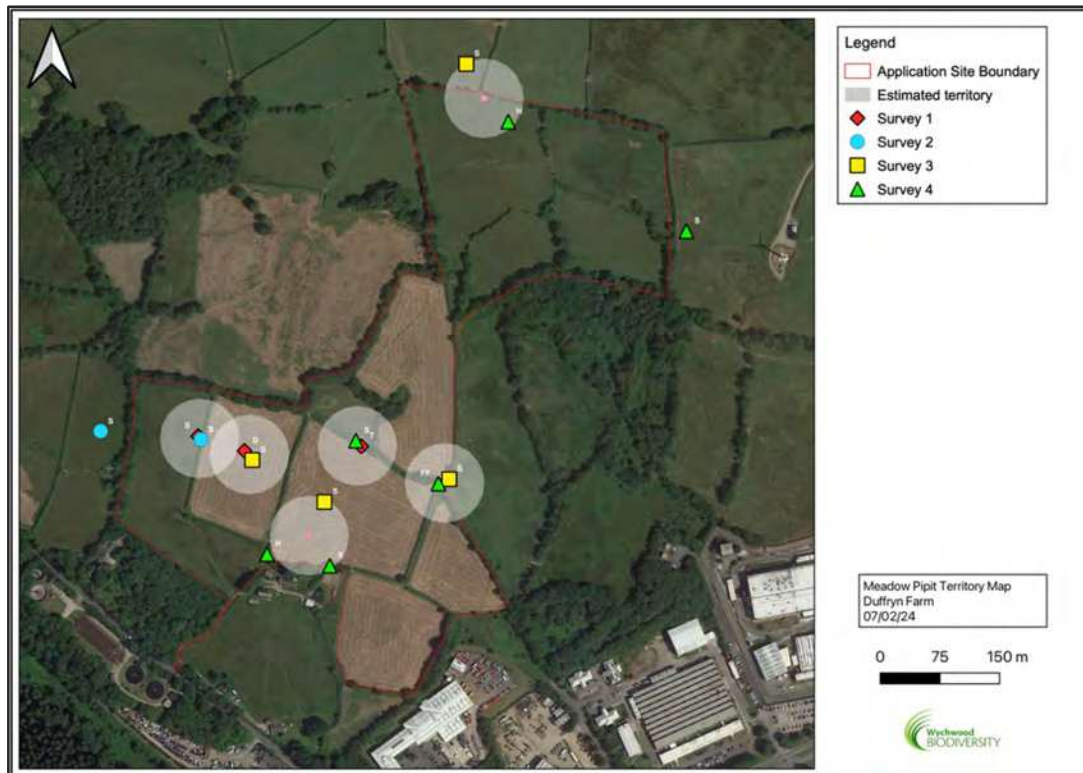
Figure 2. Lesser Horseshoe Bat records obtained during transect surveys.



Figure 3. *Myotis* sp. Bat records obtained during transect surveys.



**Figure 4. Gnawed hazel nuts.**



**Figure 5. Meadow Pipit territory map** (S denotes singing individuals, D denotes distraction display, T denotes territorial behaviour, FF denotes carrying food, and H refers to the bird being in appropriate breeding habitat.)



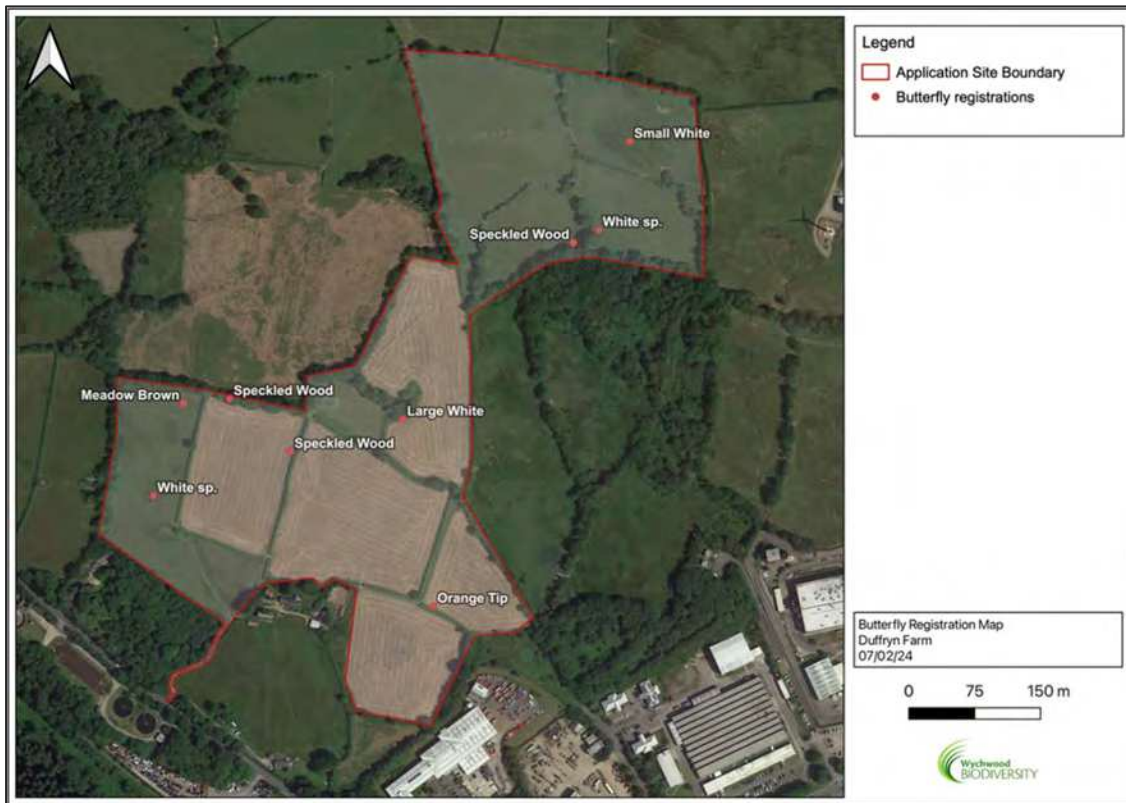


Figure 6. Opportunistic butterfly observations map.

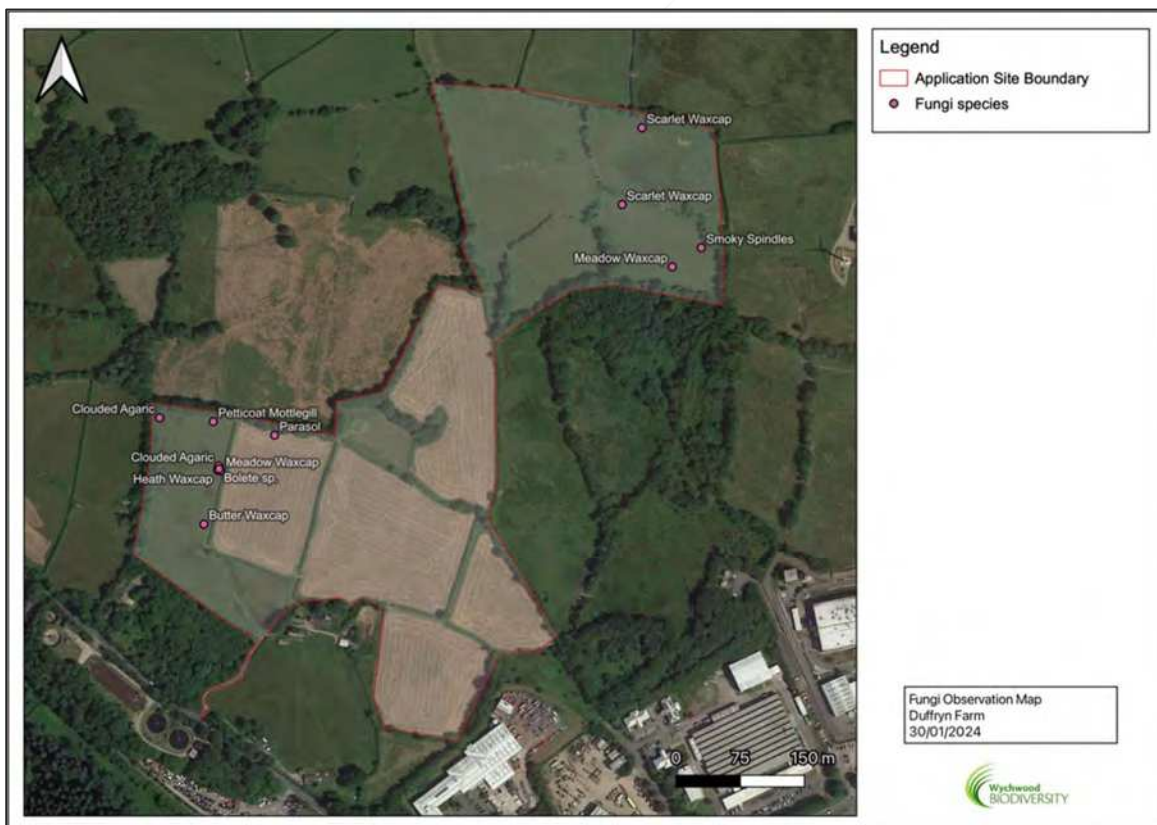


Figure 7. Fungi observation map

## EclA report tables

**Table 4. All plant species identified within Acid Grassland and abundance codes.**

Common name	Scientific name	Field no.
		10
Marsh Thistle	<i>Cirsium palustre</i>	R
Common Bird's-foot-trefoil	<i>Lotus corniculatus</i>	F
Ribwort Plantain	<i>Plantago lanceolata</i>	F
Tormentil	<i>Potentilla erecta</i>	OLF
Meadow Buttercup	<i>Ranunculus acris</i>	O
Bulbous Buttercup	<i>Ranunculus bulbosus</i>	O
Dandelion	<i>Taraxacum officinale</i> agg.	R
Common Dog-violet	<i>Viola riviniana</i>	R
Common Bent	<i>Agrostis capillaris</i>	A
Sweet Vernal Grass	<i>Anthoxanthum odoratum</i>	A
Spring Sedge	<i>Carex caryophyllaea</i>	R
Cock's-foot	<i>Dactylis glomerata</i>	R
Sheep's-fescue	<i>Festuca ovina</i> agg.	RLA
Red Fescue	<i>Festuca rubra</i> agg.	OLA
Yorkshire-fog	<i>Holcus lanatus</i>	O
Field Wood-rush	<i>Luzula campestris</i>	A
Neat Feather-moss	<i>Pseudoscleropodium purum</i>	A
Springy Turf-moss	<i>Rhytiadelphus squarrosus</i>	R

**Table 5. All plant species identified within Transitional Grassland and abundance codes.**

Common name	Scientific name	Field no.
		11
Yarrow	<i>Achillea millefolium</i>	R
Cuckooflower	<i>Cardamine pratensis</i>	R
Common Mouse-ear	<i>Cerastium fontanum</i>	R
Marsh Thistle	<i>Cirsium palustre</i>	R
Lesser Celandine	<i>Ficaria verna</i> ssp. <i>Fertilis</i>	R
Ribwort Plantain	<i>Plantago lanceolata</i>	O
Meadow Buttercup	<i>Ranunculus acris</i>	F
Bulbous Buttercup	<i>Ranunculus bulbosus</i>	R
Creeping Buttercup	<i>Ranunculus repens</i>	O
Common Sorrel	<i>Rumex acetosa</i>	O
Curled Dock	<i>Rumex crispus</i>	R
White Clover	<i>Trifolium repens</i>	R
Common Bent	<i>Agrostis capillaris</i>	A
Creeping Bent	<i>Agrostis stolonifera</i>	R
Sweet Vernal Grass	<i>Anthoxanthum odoratum</i>	A
Crested Dog's-tail	<i>Cynosurus cristatus</i>	R
Red Fescue	<i>Festuca rubra</i> agg.	OLA
Yorkshire-fog	<i>Holcus lanatus</i>	A
Soft Rush	<i>Juncus effusus</i>	RLF
Perennial Ryegrass	<i>Lolium perenne</i>	R
Field Wood-rush	<i>Luzula campestris</i>	OLF
Neat Feather-moss	<i>Pseudoscleropodium purum</i>	O

**Table 6. All plant species identified within the rush dominated areas and abundance codes.**

Common name	Scientific name	Parcel no.	
		R12	R1
Cuckooflower	<i>Cardamine pratensis</i>	O	O
Marsh Thistle	<i>Cirsium palustre</i>	OLA	
Great Willowherb	<i>Epilobium hirsutum</i>	F	
Broad-leaved Willowherb	<i>Epilobium montanum</i>	R	
Common Marsh-bedstraw	<i>Galium palustre</i>	R	
Greater Bird's-foot-trefoil	<i>Lotus pedunculatus</i>	O	
Water-purslane	<i>Lythrum portula</i>	OLA	R
Tormentil	<i>Potentilla erecta</i>		R
Meadow Buttercup	<i>Ranunculus acris</i>		A
Lesser Spearwort	<i>Ranunculus flammula</i>	RLF	R
Creeping Buttercup	<i>Ranunculus repens</i>	A	O
Common Sorrel	<i>Rumex acetosa</i>	RLF	
Goat Willow	<i>Salix caprea</i>	R	
Bog Stichwort	<i>Stellaria alsine</i>	O	
Brooklime	<i>Veronica beccabunga</i>	O	
Velvet Bent	<i>Agrostis canina</i>		A
Common Bent	<i>Agrostis capillaris</i>		A
Sweet Vernal Grass	<i>Anthoxanthum odoratum</i>		A
Brown Sedge	<i>Carex disticha</i>	R	R
Yorkshire-fog	<i>Holcus lanatus</i>		A
Jointed Rush	<i>Juncus articulatus</i>	F	A
Soft Rush	<i>Juncus effusus</i>	A	
Rough-stalked Feather-moss	<i>Brachythecium rutabulum</i>	O	

**Table 7. All plant species identified within Semi-improved Grassland and abundance codes.**

Common name	Scientific name	Field numbers/Abundance codes			
		1,8,9	2,3,7,	4,5,6	11
Yarrow	<i>Achillea millefolium</i>		O		R
Cuckooflower	<i>Cardamine pratensis</i>	R	R	R	R
Common Mouse-ear	<i>Cerastium fontanum</i>	R		R	R
Creeping Thistle	<i>Cirsium arvense</i>			R	
Marsh Thistle	<i>Cirsium palustre</i>	R		R	R
Lesser Celandine	<i>Ficaria verna ssp. Fertilis</i>	R		O	R
Cat's-ear	<i>Hypochaeris radicata</i>		O		
Ribwort Plantain	<i>Plantago lanceolata</i>		OLF		O
Meadow Buttercup	<i>Ranunculus acris</i>	F	F	F	F
Bulbous Buttercup	<i>Ranunculus bulbosus</i>	R	R	R	R
Creeping Buttercup	<i>Ranunculus repens</i>	O	O	RLA	O
Common Sorrel	<i>Rumex acetosa</i>	O	O	O	O
Curled Dock	<i>Rumex crispus</i>	R		R	R
Red Clover	<i>Trifolium pratense</i>	R			
White Clover	<i>Trifolium repens</i>	R	R	O	R
Common Bent	<i>Agrostis capillaris</i>	A	A	A	A
Creeping Bent	<i>Agrostis stolonifera</i>	R		R	R
Sweet Vernal Grass	<i>Anthoxanthum odoratum</i>	A	A	A	A
False Oat-grass	<i>Arrhenatherum elatius</i>			R	
Spring Sedge	<i>Carex caryophyllea</i>		R		
Crested Dog's-tail	<i>Cynosurus cristatus</i>	R	R	O	R
Cock's-foot	<i>Dactylis glomerata</i>		R		
Red Fescue	<i>Festuca rubra agg.</i>	OLA	OLA	RLF	OLA
Yorkshire-fog	<i>Holcus lanatus</i>	A	A	A	A
Soft Rush	<i>Juncus effusus</i>	RLF	RLF	RLF	RLF
Perennial Ryegrass	<i>Lolium perenne</i>	R	O	F	R
Field Wood-rush	<i>Luzula campestris</i>	OLF	OLF		OLF
Rough-stalked	<i>Brachythecium rutabulum</i>		R		
Neat Feather-moss	<i>Pseudoscleropodium purum</i>	O	R	R	O

**Table 8.1. Hedgerows and Lines of Trees survey data (H1 – H15)**

Ref.	Type	UKHab Code	Condition	Fail criteria	Length (m)	Shrub, climber and tree species	Comments
H1	Species-rich native hedgerow	h2a5	Good	C2	185	common hawthorn, common holly, blackthorn, common hazel, dog rose, grey willow, black bryony, bramble	none
h2a	Native hedgerow	h2a	Good	None	107	common holly, common hazel, common hawthorn, sycamore	none
H3	Species-rich native hedgerow	h2a5	Good	None	148	common holly, pedunculate oak, common hawthorn, common hazel, blackthorn, rowan, bramble.	Rowan and oak in the form of hedge shrubs
H4	Native hedgerow	h2a	Good	None	52	common holly, common holly, bracken	Holly hedge with Hazel allowed to grow at back. Holly 1.5m high, hazel 3m high. Bracken mixed in with the holly.
H5	Native hedgerow	h2a	Good	A1	65	common holly, common hawthorn, bramble, common hazel	none
H6	Native hedgerow	h2a	Good	A1, D2	61	common hazel, bracken, bramble	Heavily flayed.
H7	Line of Trees	w34	Moderate	E1	119	common hazel, common hawthorn, blackthorn, common holly, European ash, common elder	none
H8	Species-rich native hedgerow with trees - associated with bank or ditch	h2a5	Good	E1	161	common hazel, common hawthorn, blackthorn, rowan, dog rose, bramble, common holly, grey willow, European ash, sycamore, pedunculate oak	none
H9	Native hedgerow	h2a	Good	None	124	common holly, common hazel, bramble, bracken, dog rose	none
H10	Fence	n/a	n/a	n/a	119	bramble	1 small patch of bramble
H11	Species-rich native hedgerow - associated with bank or ditch	h2a5	Good	None	203	common hawthorn, common holly, common hazel, common dogwood, blackthorn, sycamore, grey willow, bramble, pedunculate oak, rowan, climbing nightshade, common honeysuckle, bracken, rosebay willowherb	One 14m segment: hazel allowed to grow up to 4m high. One 19m segment: hazel, and willow allowed to grow up to 4m high.
H12	Species-rich native hedgerow	h2a5	Good	None	34	common holly, common hazel, common hawthorn, blackthorn, elder, dog rose, grey willow	none
H13	Species-rich native hedgerow	h2a5	Good	None	258	common hazel, blackthorn, bramble, common honeysuckle, rose sp., bracken, black bryony, common holly, common hawthorn	none
H14	Species-rich native hedgerow	h2a5	Good	None	128	common holly, common hazel, European ash, bracken	Bracken only on wind farm side in upper field. Occasional ash.
H15	Species-rich native hedgerow - associated with bank or ditch	h2a5	Good	None	138	blackthorn, bramble	Blackthorn (relatively recently planted), occasional bramble in places.

**Table 8.2. Hedgerows and Lines of Trees survey data (H16-H31)**

Ref.	Type	UKHab Code	Condition	Fail criteria	Length (m)	Shrub, climber and tree species	Comments
H16	Species-rich native hedgerow - associated with bank or ditch	h2a5	Poor	A1, A2, B1, B2	98	blackthorn, bramble, common holly, common gorse, common hawthorn, pedunculate oak, common hazel	Uncut shrubs slightly sparse. 33m defunct.
H17	Native hedgerow	h2a	Moderate	B1, B2, D2	87	common hazel, common hawthorn, blackthorn	Sparse with breaks.
H18	Native hedgerow	h2a	Moderate	B1, B2, D2	64	common hazel, common holly	Sparse with breaks. Mature stunted hazel with thin holly shrubs.
H19	Native hedgerow with trees	h2a	Moderate	B2, D2, E1	93	common hazel, common holly, blackthorn, pedunculate oak	Coppiced hazel
h2a0	Line of trees	w34	Good	None	557	European ash, pedunculate oak, common hazel (u), common hawthorn (u), common holly (u), European crab apple (u)	none
h2a1	Line of trees - associated with bank or ditch	w34	Good	None	180	pedunculate oak, silver birch, black alder, European ash (u), common holly (u), common hazel (u), grey willow (u), blackthorn (u), rowan (u)	none
h2a2	Line of Trees	w34	Moderate	B, C	68	common hazel, sycamore, common holly (u)	Overgrown hedge with stands of hazel, sycamore, and holly (understory)
h2a3	Line of trees - associated with bank or ditch	w34	Moderate	B	61	pedunculate oak, common holly, common ivy (u), dog rose (u), common hazel (u)	none
h2a4	Line of trees - associated with bank or ditch	w34	Moderate	D	98	common hazel, pedunculate oak, silver birch	Mature hazel
h2a5	Line of trees - associated with bank or ditch	w34	Moderate	B	82	pedunculate oak, blackthorn (u), common holly (u), common hawthorn (u)	Sparse line of mature oaks with occasional blackthorn, Holly, and hawthorn shrubs under
h2a6	Line of trees - associated with bank or ditch	w34	Good	None	109	pedunculate oak, common holly, grey willow, silver birch, common hazel	Sparse mature line of trees merging with holly hedge
h2a7	Line of trees - associated with bank or ditch	w34	Good	None	244	pedunculate oak, common holly, European ash, silver birch, common hazel, dog rose, blackthorn	Semi mature oak
h2a8	Line of trees	w34	Good	None	105	sycamore, common hazel, common holly	none
h2a9	Line of trees - associated with bank or ditch	w34	Good	None	75	pedunculate oak, common hazel (u)	none
H30	Line of trees - associated with bank or ditch	w34	Moderate	B, C	88	common holly, common hawthorn	Defunct hedge isolated stands
H31	Native hedgerow	h2a	Good	A1	86	blackthorn, bramble, common hazel	none
Fence 1	Fence	n/a	n/a	n/a	80	n/a	none
Fence 2	Fence	n/a	n/a	n/a	82	n/a	none



**Table 9.** All Bat species recorded within 2km of The Site over the past 10 years.

#	Common name	Scientific name	Closest record (km)	No. records	Total abundance
1	Common Pipistrelle	<i>Pipistrellus pipistrellus</i>	0.456	3	178
2	Noctule	<i>Nyctalus noctula</i>	0.456	2	2
3	Soprano Pipistrelle	<i>Pipistrellus pygmaeus</i>	0.456	5	19
4	Whiskered Bat	<i>Myotis mystacinus</i>	0.814	1	1
5	Brown Long-eared Bat	<i>Plecotus auritus</i>	0.951	2	20
6	Lesser Horseshoe Bat	<i>Rhinolophus hipposideros</i>	0.951	2	17
7	Greater Horseshoe Bat	<i>Rhinolophus ferrumequinum</i>	1.211	1	1
/	Bat species	<i>Myotis sp.</i>	n/a	1	5
/	Bat species	<i>Pipistrellus sp.</i>	n/a	2	12

**Table 10.** All protected or notable bird species recorded within 2km of The Site over the past 10 years.

#	Common name	Scientific name	Closest record (km)	No. records
1	Red Crossbill	<i>Loxia curvirostra</i>	0.238	4
2	Duncock	<i>Prunella modularis</i>	0.238	17
3	Song Thrush	<i>Turdus philomelos</i>	0.238	21
4	Mallard	<i>Anas platyrhynchos</i>	0.47	8
5	European Herring Gull	<i>Larus argentatus</i>	0.47	13
6	Eurasian Bullfinch	<i>Pyrrhula pyrrhula</i>	0.47	15
7	Eurasian Green Woodpecker	<i>Picus viridis</i>	0.528	10
8	Common Kingfisher	<i>Alcedo atthis</i>	0.567	3
9	Common Swift	<i>Apus apus</i>	0.586	6
10	Eurasian Skylark	<i>Alauda arvensis</i>	0.7	9
11	Common Whitethroat	<i>Curruca communis</i>	0.7	7
12	Lesser Black-backed Gull	<i>Larus fuscus</i>	0.7	12
13	Eurasian Linnet	<i>Linaria cannabina</i>	0.7	14
14	Willow Warbler	<i>Phylloscopus trochilus</i>	0.7	16
15	Sand Martin	<i>Riparia riparia</i>	0.7	2
16	Long-tailed Tit	<i>Aegithalos caudatus</i>	0.732	12
17	White-throated Dipper	<i>Cinclus cinclus</i>	0.732	8
18	Common House Martin	<i>Delichon urbicum</i>	0.732	3
19	Grey Wagtail	<i>Motacilla cinerea</i>	0.732	7
20	Western Yellow Wagtail	<i>Motacilla flava</i>	0.732	1
21	Spotted Flycatcher	<i>Muscicapa striata</i>	0.732	3
22	Wood Warbler	<i>Phylloscopus sibilatrix</i>	0.732	3
23	Marsh Tit	<i>Poecile palustris</i>	0.732	2
24	Goldcrest	<i>Regulus regulus</i>	0.732	9
25	Common Starling	<i>Sturnus vulgaris</i>	0.732	8
26	Mistle Thrush	<i>Turdus viscivorus</i>	0.732	10
27	Barn Swallow	<i>Hirundo rustica</i>	0.76	9
28	House Sparrow	<i>Passer domesticus</i>	0.76	10
29	Common Snipe	<i>Gallinago gallinago</i>	0.825	4
30	Redwing	<i>Turdus iliacus</i>	0.827	8
31	European Nightjar	<i>Caprimulgus europaeus</i>	0.936	1
32	Tree Pipit	<i>Anthus trivialis</i>	0.945	4
33	European Greenfinch	<i>Chloris chloris</i>	0.945	7
34	Brambling	<i>Fringilla montifringilla</i>	0.945	1
35	Common Reed Bunting	<i>Emberiza schoeniclus</i>	1.313	9
36	Common Grasshopper Warbler	<i>Locustella naevia</i>	1.365	5
37	Meadow Pipit	<i>Anthus pratensis</i>	1.386	14
38	Eurasian Hobby	<i>Falco subbuteo</i>	1.452	1
39	Common Cuckoo	<i>Cuculus canorus</i>	1.504	4
40	Common Kestrel	<i>Falco tinnunculus</i>	1.504	3
41	Red Kite	<i>Milvus milvus</i>	1.504	2
42	Northern Wheatear	<i>Oenanthe oenanthe</i>	1.504	1
43	Fieldfare	<i>Turdus pilaris</i>	1.504	1
44	Northern Goshawk	<i>Accipiter gentilis</i>	1.592	3
45	Common Redstart	<i>Phoenicurus phoenicurus</i>	1.688	2
46	Grey Heron	<i>Ardea cinerea</i>	1.713	1
47	Black-headed Gull	<i>Chroicocephalus ridibundus</i>	1.952	1

**Table 11.** All herptile species recorded within 2km of The Site over the past 10 years.

#	Common name	Scientific name	Closest record (km)	No. records
1	Common Frog	<i>Rana temporaria</i>	0.628	13
2	Common Toad	<i>Bufo bufo</i>	0.866	10
3	Common Lizard	<i>Zootoca vivipara</i>	1.137	22
4	Palate Newt	<i>Lissotriton helveticus</i>	1.139	8
5	Grass Snake	<i>Natrix helvetica</i>	1.504	6
6	Adder	<i>Vipera berus</i>	1.713	12
7	Slow-worm	<i>Anguis fragilis</i>	1.993	1

**Table 12.** All protected or notable invertebrate species recorded within 2km of The Site over the past 10 years.

#	Common name	Scientific name	Closest record (km)
1	Bramble Bronze	<i>Argemone micella</i>	0.763
2	Violet Oil-beetle	<i>Meloe violaceus</i>	0.811
3	n/a	<i>Lithobius (Lithobius) pilicornis</i>	0.934
4	n/a	<i>Parakontikia ventralineata</i>	0.934
5	Speckled Bush-cricket	<i>Leptophyes punctatissima</i>	1.116
6	Western Bee-fly	<i>Bombylius canescens</i>	1.22
7	Cinnabar	<i>Tyria jacobaeae</i>	1.238
8	Beautiful Demoiselle	<i>Calopteryx virgo</i>	1.266
9	Small Pearl-bordered Fritillary	<i>Boloria selene</i>	1.371
10	Marsh Fritillary	<i>Euphydryas aurinia</i>	1.405
11	Brown-banded Carder Bee	<i>Bombus humilis</i>	1.492
12	Broom Moth	<i>Ceramica pisi</i>	1.504
13	Golden-ringed Dragonfly	<i>Cordulegaster boltonii</i>	1.504
14	Shaded Broad-bar	<i>Scotopteryx chenopodiata</i>	1.504
15	Long-winged Cone-head	<i>Conocephalus fuscus</i>	1.526
16	Adonis' Ladybird	<i>Hippodamia variegata</i>	1.546
17	Garden Tiger	<i>Arctia caja</i>	1.613
18	White-spotted Sable	<i>Anania funebris</i>	1.633
19	Banded Demoiselle	<i>Calopteryx splendens</i>	1.667
20	Dingy Skipper	<i>Erynnis tages</i>	1.667
21	Small Heath	<i>Coenonympha pamphilus</i>	1.67
22	Jenkins' Spire Snail	<i>Potamopyrgus antipodarum</i>	1.68
23	Small Phoenix	<i>Ecliptopera silaceata</i>	1.713
24	Knot Grass	<i>Acronicta rumicis</i>	1.721
25	Grayling	<i>Hipparchia semele</i>	1.776
26	Slender Ground-hopper	<i>Tetrix subulata</i>	1.836
27	Blood-vein	<i>Timandra comae</i>	1.866
28	Keeled Skimmer	<i>Orthetrum coerulescens</i>	1.886
29	Scarce Grass-moth	<i>Crambus pratella</i>	1.897
30	Large Sallow Mining Bee	<i>Andrena apicata</i>	1.921
31	Latticed Heath	<i>Chiasmia clathrata</i>	1.933
32	Dusky Brocade	<i>Apamea remissa</i>	1.939
33	Small Square-spot	<i>Diarsia rubi</i>	1.939
34	White Ermine	<i>Spilosoma lubricipeda</i>	1.939
35	Dot Moth	<i>Melanchra persicariae</i>	1.993
36	n/a	<i>Sapromyza opaca</i>	1.993
37	n/a	<i>Xylota xanthocnema</i>	1.993

**Table 13.** Butterfly observation table

Common name	Scientific name	Field no.	Date
Orange Tip	<i>Anthocharis cardamines</i>	4	26/05/2023
Meadow Brown	<i>Maniola jurtina</i>	1	09/08/2023
Speckled Wood	<i>Pararge aegeria</i>	2	10/08/2023
Speckled Wood	<i>Pararge aegeria</i>	2	17/08/2023
Speckled Wood	<i>Pararge aegeria</i>	11	26/05/2023
Large White	<i>Pieris brassicae</i>	7	26/05/2023
Small White	<i>Pieris rapae</i>	9	26/05/2023
White sp.	<i>Pieris sp.</i>	1	17/08/2023
White sp.	<i>Pieris sp.</i>	10	26/05/2023

**Table 14.** All protected or notable fungi species recorded within 2km of The Site over the past 10 years.

#	Common name	Scientific name	Closest record (km)
1	Aromatic Pinkgill	<i>Entoloma pleopodium</i>	0.864
2	n/a	<i>Entoloma allospermum</i>	1.041
3	n/a	<i>Entoloma chalybeum</i>	1.041
4	Lilac Pinkgill	<i>Entoloma porphyrophaeum</i>	1.041
5	n/a	<i>Hygrocybe acutoconica</i>	1.041
6	Blackening Waxcap	<i>Hygrocybe conica</i>	1.195
7	Yellow Foot Waxcap	<i>Cuphophyllus flavipes</i>	1.504
8	Meadow Waxcap	<i>Cuphophyllus pratensis</i> var. <i>pratensis</i>	1.504
9	Parrot Waxcap	<i>Gliophorus psittacinus</i>	1.504
10	Butter Waxcap	<i>Hygrocybe ceracea</i>	1.504
11	Golden Waxcap	<i>Hygrocybe chlorophana</i>	1.504
12	Glutinous Waxcap	<i>Hygrocybe glutinipes</i> var. <i>glutinipes</i>	1.504
13	Garlic Waxcap	<i>Hygrocybe helobia</i>	1.504
14	Fibrous Waxcap	<i>Hygrocybe intermedia</i>	1.504
15	Honey Waxcap	<i>Hygrocybe reidii</i>	1.504
16	Pointed Club	<i>Clavaria falcata</i>	1.688
17	Straw Club	<i>Clavaria flavipes</i>	1.688
18	White Spindles	<i>Clavaria fragilis</i>	1.688
19	Skinny Club	<i>Clavaria incarnata</i>	1.688
20	n/a	<i>Clavaria tenuipes</i>	1.688
21	Meadow Coral	<i>Clavulinopsis corniculata</i>	1.688
22	Golden Spindles	<i>Clavulinopsis fusiformis</i>	1.688
23	Yellow Club	<i>Clavulinopsis helvola</i>	1.688
24	Handsome Club	<i>Clavulinopsis laeticolor</i>	1.688
25	Toasted Waxcap	<i>Cuphophyllus colemannianus</i>	1.688
26	Cedarwood Waxcap	<i>Cuphophyllus russocoriaceus</i>	1.688
27	Snowy Waxcap	<i>Cuphophyllus virgineus</i> var. <i>virgineus</i>	1.688
28	Wood Pinkgill	<i>Entoloma rhodopolium</i>	1.688
29	Deceptive Earthtongue	<i>Geoglossum fallax</i>	1.688
30	Plain Earthtongue	<i>Geoglossum umbratile</i>	1.688
31	Butterscotch Waxcap	<i>Gliophorus europaerplexus</i>	1.688
32	Heath Waxcap	<i>Gliophorus laetus</i>	1.688
33	Glutinous Earthtongue	<i>Glutinoglossum glutinosum</i> s. lat.	1.688
34	n/a	<i>Hodophilus cambriensis</i>	1.688
35	n/a	<i>Hodophilus variabilipes</i>	1.688
36	Citrine Waxcap	<i>Hygrocybe citrinovirens</i>	1.688
37	n/a	<i>Hygrocybe glutinipes</i>	1.688
38	Spangle Waxcap	<i>Hygrocybe insipida</i>	1.688
39	Goblet Waxcap	<i>Hygrocybe lepida</i>	1.688
40	Vermilion Waxcap	<i>Hygrocybe miniata</i>	1.688
41	n/a	<i>Hygrocybe substrangulata</i>	1.688
42	n/a	<i>Illosporopsis christiansenii</i>	1.688
43	n/a	<i>Trichoglossum hirsutum</i>	1.688
44	Date Waxcap	<i>Hygrocybe spadicea</i>	1.811

**Table 15.** Fungi observation table

Field No.	Common name	Scientific name	Quantity
1	Bolete sp.	<i>Boletales</i> sp.	2-5
1	Clouded Agaric	<i>Clitocybe nebularis</i>	2-5
1	Clouded Agaric	<i>Clitocybe nebularis</i>	2-5
1	Meadow Waxcap	<i>Cuphophyllus pratensis</i>	2-5
1	Heath Waxcap	<i>Gliophorus laetus</i>	2-5
1	Butter Waxcap	<i>Hygrocybe chlorophana</i>	6-20
1	Petticoat Mottlegill	<i>Panaeolus papilionaceus</i>	6-20
2	Parasol	<i>Macrolepiota procera</i>	2-5
9	Scarlet Waxcap	<i>Hygrocybe coccinea</i>	2-5
10	Smoky Spindles	<i>Clavaria fumosa</i>	1
10	Meadow Waxcap	<i>Cuphophyllus pratensis</i>	2-5
10	Scarlet Waxcap	<i>Hygrocybe coccinea</i>	2-5



**Table 16.** All protected or notable plant species recorded within 2km of The Site over the past 10 years.

Sub-Group	#	Common name	Scientific name	Closest record (km)
Vascular Plants	1	Annual Beard-grass	<i>Polypogon monspeliensis</i>	0.545
	2	Annual Knawel	<i>Scleranthus annuus subsp. annuus</i>	0.645
	3	Round-leaved Crane's-bill	<i>Geranium rotundifolium</i>	0.653
	4	Stone Parsley	<i>Sison amomum</i>	0.653
	5	Bluebell	<i>Hyacinthoides non-scripta</i>	0.732
	6	Early Marsh-orchid	<i>Dactylorhiza incarnata</i>	0.76
	7	Welsh Poppy	<i>Meconopsis cambrica</i>	0.76
	8	Bee Orchid	<i>Ophrys apifera</i>	0.76
	9	Solomon's-seal	<i>Polygonatum multiflorum</i>	0.76
	10	Narrow-leaved Everlasting-pea	<i>Lathyrus sylvestris</i>	0.946
	11	Wood Club-rush	<i>Scirpus sylvaticus</i>	0.96
	12	n/a	<i>Epilobium parviflorum x montanum = E. x limosum</i>	1.119
	13	Flowering-rush	<i>Butomus umbellatus</i>	1.214
	14	Meadow Barley	<i>Hordeum secalinum</i>	1.274
	15	Corn Mint	<i>Mentha arvensis</i>	1.274
	16	Royal Fern	<i>Osmunda regalis</i>	1.501
	17	Moonwort	<i>Botrychium lunaria</i>	1.502
	18	Climbing Corydalis	<i>Ceratocarpus claviculata</i>	1.502
	19	Intermediate Lady's-mantle	<i>Alchemilla xanthochlora</i>	1.512
	20	Knapweed	<i>Centaurea</i>	1.533
	21	Spotted Medick	<i>Medicago arabica</i>	1.575
	22	Cornish Moneywort	<i>Sibthorpia europaea</i>	1.587
	23	Sweet-briar	<i>Rosa rubiginosa</i>	1.605
	24	Wintergreen	<i>Pyrola rotundifolia</i>	1.688
	25	English Sticky Eyebright	<i>Euphrasia officinalis subsp. anglica</i>	1.79
	26	Alder Buckthorn	<i>Frangula alnus</i>	1.857
	27	Charlock	<i>Sinapis arvensis</i>	1.901
	28	Hybrid Woundwort	<i>Stachys sylvatica x palustris = S. x ambigua</i>	1.952
Bryophytes	1	Silesian Feather-moss	<i>Herzogiella seligeri</i>	0.664
	2	Heath Star Moss	<i>Campylopus introflexus</i>	0.805
	3	Chalk Comb-moss	<i>Ctenidium molluscum</i>	0.945
	4	Ciliated Fringewort	<i>Ptilidium ciliare</i>	1.642
	5	Fountain Smoothcap	<i>Atrichum crispum</i>	1.716

**Table 17.** All invasive non-native plant species recorded within 2km of The Site over the past 10 years.

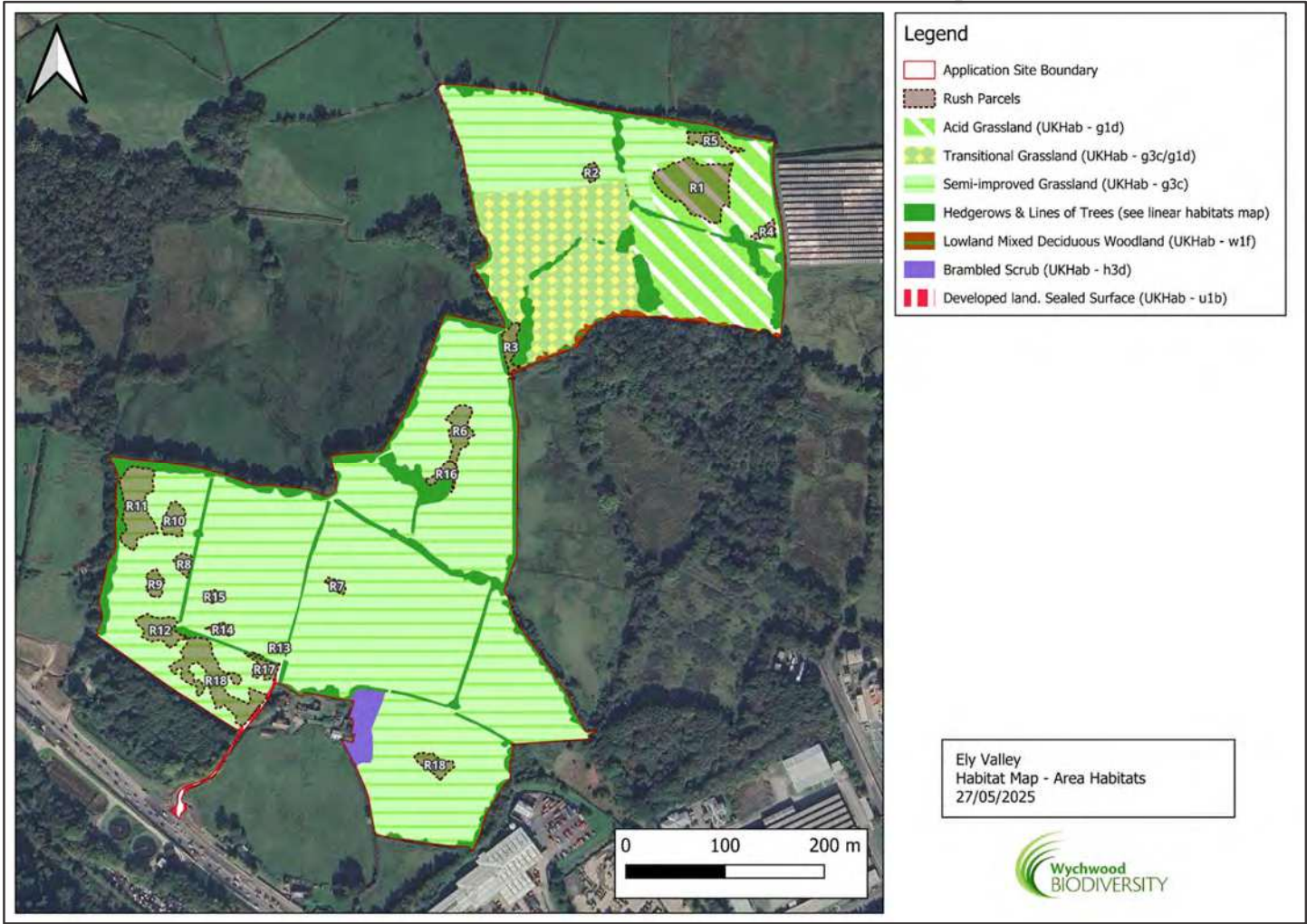
#	Common name	Scientific name	Closest record (km)
1	Japanese Knotweed	<i>Fallopia japonica</i>	0.556
2	Himalayan Balsam	<i>Impatiens glandulifera</i>	0.556
3	Monkeyflower	<i>Mimulus guttatus</i>	0.556
4	Floating Pennywort	<i>Hydrocotyle ranunculoides</i>	0.628
5	Butterfly-bush	<i>Buddleja davidii</i>	0.732
6	Three-cornered Garlic	<i>Allium triquetrum</i>	0.76
7	Spanish Bluebell	<i>Hyacinthoides hispanica</i>	0.76
8	Montbretia	<i>Crocasmia pottsii x aurea = C. x crocosmiflora</i>	1.137
9	Sweet-flag	<i>Acorus calamus</i>	1.22
10	Variegated Yellow Archangel	<i>Lamiastrum galeobdolon subsp. argentatum</i>	1.225
11	Cherry Laurel	<i>Prunus laurocerasus</i>	1.234
12	Cotoneaster	<i>Cotoneaster</i>	1.546
13	New Zealand Willowherb	<i>Epilobium brunnescens</i>	1.641
14	Snowberry	<i>Symphoricarpos albus</i>	1.713
15	Parrot's-feather	<i>Myriophyllum aquaticum</i>	1.775

## References

- Bibby, C., Burgess, N.D., Hill, D. and Mustoe, S. (2000). Bird Census Techniques – Second Edition, Academic Press, London, England.
- Calyx Environmental (2024) Bat Activity Surveys - Proposed Solar Farm at Duffryn Farm. Prepared by Mike Bird, Calyx Environmental Ltd. May 2024
- CIEEM (2021). Biodiversity Net Gain Report and Audit Templates Chartered Institute of Ecology and Environmental Management, Winchester, UK.
- Cranfield Soil and Agrifood Institute (2023). Soilscales. Available at <https://www.landis.org.uk/soilscales/index.cfm>
- Marchant, J.H. (1983). Common Birds Census instructions. BTO, Tring. 12pp.
- Natural England. (2021b). The Biodiversity Metric 4.0 – Technical Annex 1: Condition Assessment Sheets and Methodology. [online] Available at: <https://publications.naturalengland.org.uk/file/6188841413902336>
- Rodwell, J. (2006). National Vegetation Classification: Users' handbook. [online] Available at: <https://data.jncc.gov.uk/data/a407ebfc-2859-49cf-9710-1bde9c8e28c7/JNCC-NVC-UsersHandbook-2006.pdf>.
- UKHab Ltd (2023). UK Habitat Classification Version 2.0 (at <https://www.ukhab.org>)
- UK Government (2020). Guidance - Invasive non-native (alien) plant species: rules in England and Wales. Last updated 20<sup>th</sup> September 2022. Available at <https://www.gov.uk/guidance/invasive-non-native-alien-plant-species-rules-in-england-and-wales>
- Wychwood Biodiversity (2025a) Biodiversity Management Plan – Ely Valley Solar Farm, prepared for Sirius Planning. June 2025.
- Wychwood Biodiversity (2025b) Breeding Bird Survey Report – Ely Valley Solar Farm, prepared for Sirius Planning. *In progress*.
- Wychwood Biodiversity (2025c). Winter Bird Survey Report – Ely Valley Solar Farm, prepared for Sirius Planning. *In progress*.
- UK Government (2002). The Control of Substances Hazardous to Health Regulations 2002. Accessible at <https://www.legislation.gov.uk/uksi/2002/2677/regulation/7/made>

Appendices

Appendix I (a). Area habitat map



Legend

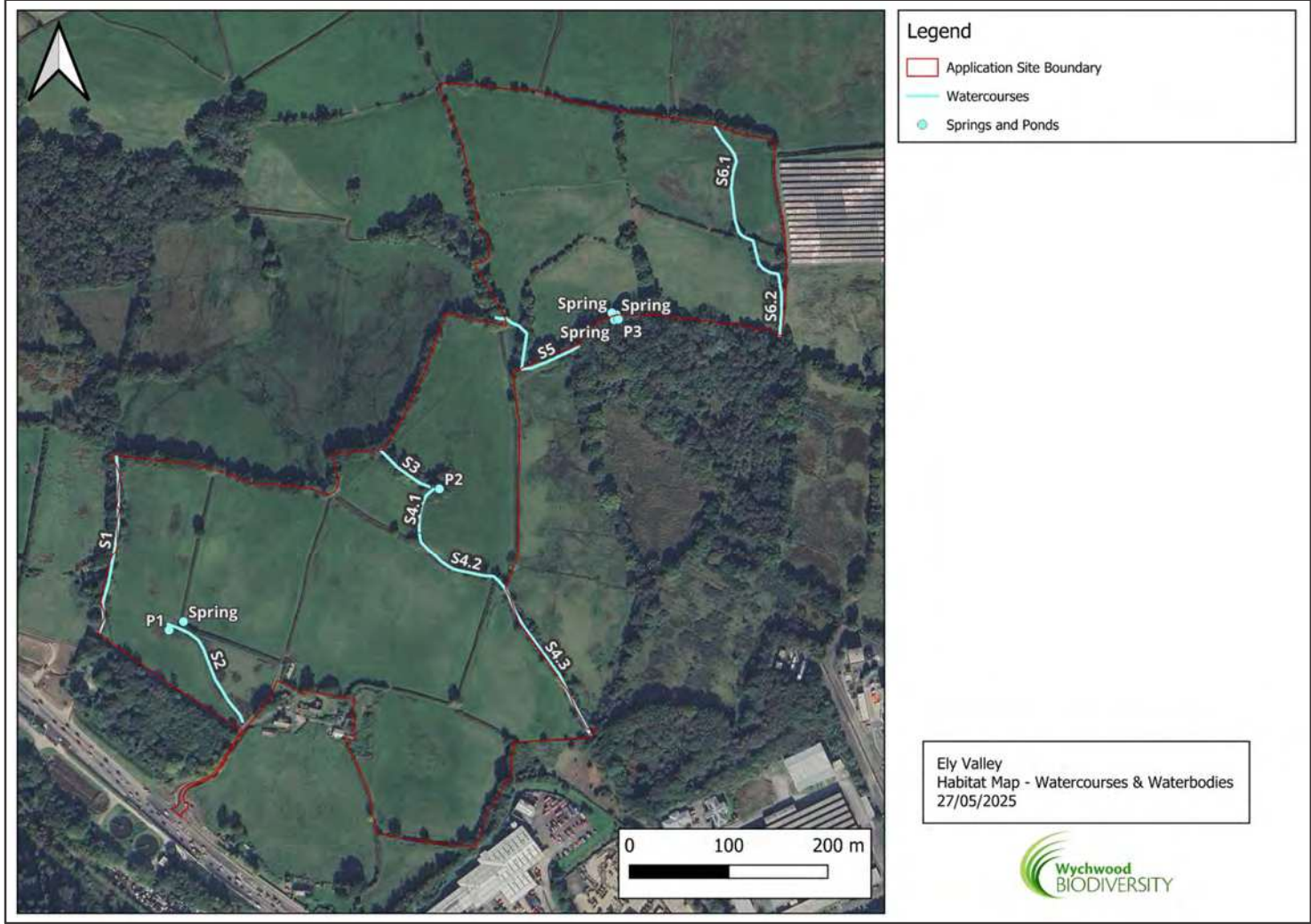
- Application Site Boundary
- Native Species Rich Hedgerow (UKHab - h2a5)
- Ecologically Valuable Line of Trees (UKHab - w34)
- Native hedgerow (UKHab - h2a)

Ely Valley  
Habitat Map - Linear Habitats  
(Hedgerows & Lines of Trees)  
27/05/2025

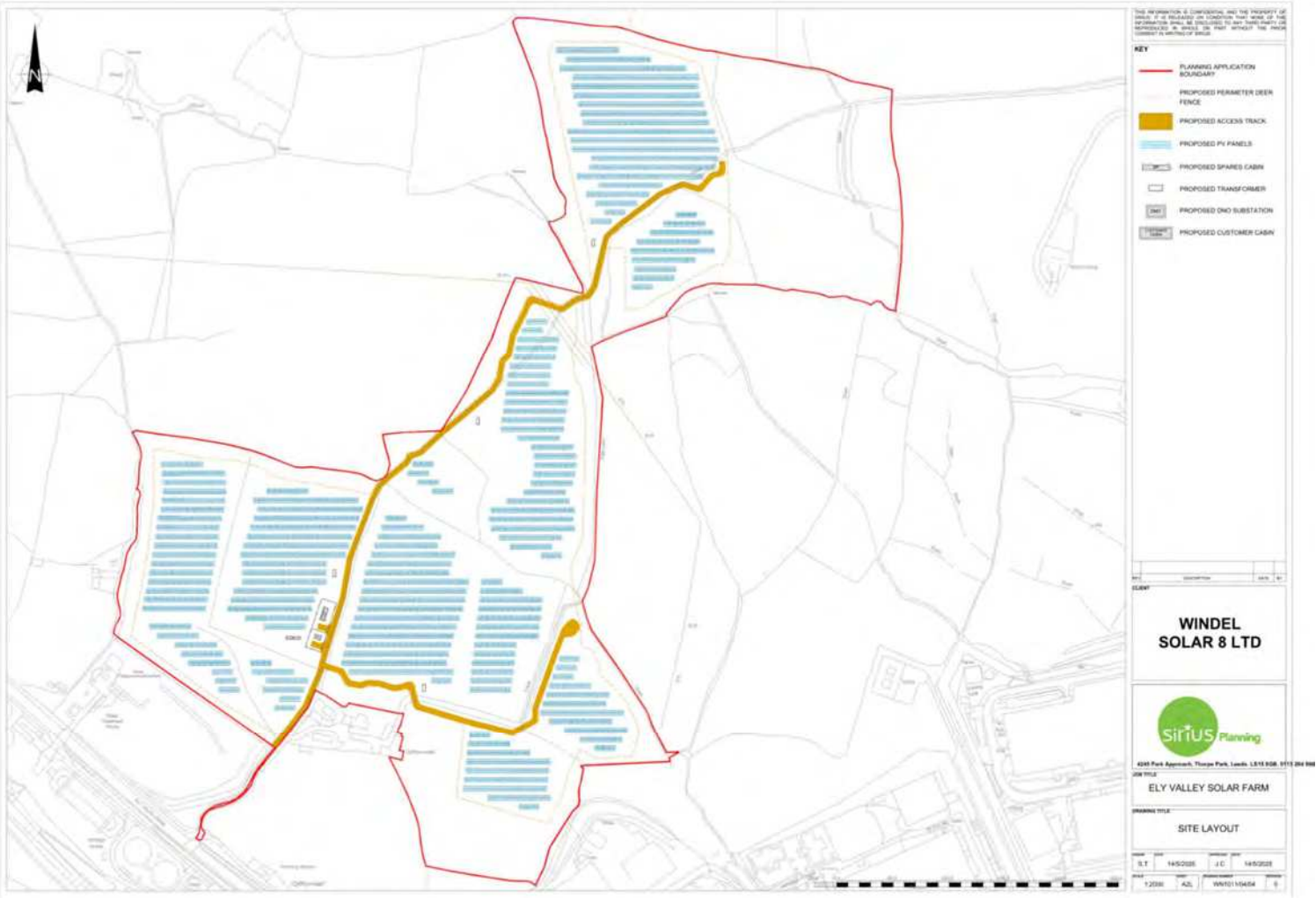
Wychwood  
BIODIVERSITY



Appendix II. Watercourses and waterbodies within The Site boundary



Appendix III. Proposed Site Layout





Appendix IV. Landscape Masterplan



**Appendix V (a). Hedgerow species checklist H1 – H16**

Habitat Ref.		H1	H2	H3	H4	H5	H6	H7	H8	H9	H10	H11	H12	H13	H14	H15	H16
UKHab Code		h2a5	h2a	h2a5	h2a	h2a	h2a	w34	h2a5	h2a	n/a	h2a5	h2a5	h2a5	h2a5	h2a5	h2a5
Length (m)		185	107	148	52	65	61	119	161	124	119	203	34	258	128	138	98
Common name	Scientific name																
Sycamore	<i>Acer pseudoplatanus</i>		✓						✓			✓					
Black Alder	<i>Alnus glutinosa</i>																
Silver Birch	<i>Betula pendula</i>																
Rosebay Willowherb	<i>Chamerion angustifolium</i>											✓					
Common Dogwood	<i>Cornus sanguinea</i>											✓					
Common Hazel	<i>Corylus avellana</i>	✓	✓	✓		✓	✓	U	✓	✓		✓	✓	✓	✓		
Common Hawthorn	<i>Crataegus monogyna</i>	✓	✓	✓		✓		U	✓			✓	✓	✓			✓
European Ash	<i>Fraxinus excelsior</i>							T	✓						✓		
Common Ivy	<i>Hedera helix</i>																
Common Holly	<i>Ilex aquifolium</i>	✓	✓	✓	✓	✓		U	✓	✓		✓	✓	✓	✓		✓
Common Honeysuckle	<i>Lonicera periclymenum</i>											✓		✓			
European Crab Apple	<i>Malus sylvestris</i>													✓			
Blackthorn	<i>Prunus spinosa</i>	✓		✓				U	✓			✓	✓			✓	✓
Bracken	<i>Pteridium aquilinum</i>				✓		✓			✓		✓		✓	✓		
Pedunculate Oak	<i>Quercus robur</i>			✓					✓			✓					✓
Dog Rose	<i>Rosa canina</i>	✓							✓	✓							
Rose sp.	<i>Rosa sp.</i>													✓			
Bramble	<i>Rubus fruticosus</i>	✓		✓		✓	✓		✓	✓	✓	✓	✓	✓		✓	✓
Grey Willow	<i>Salix cinerea</i>	✓							✓			✓	✓				
Elder	<i>Sambucus nigra</i>							U					✓				
Climbing Nightshade	<i>Solanum dulcamara</i>											✓					
Rowan	<i>Sorbus aucuparia</i>			✓					✓			✓					
Black Bryony	<i>Tamus communis</i>	✓												✓			
Common Gorse	<i>Ulex europaeus</i>																✓



# Appendix V (b). Hedgerow species checklist H17 – H31

Habitat Ref.		H17	H18	H19	H20	H21	H22	H23	H24	H25	H26	H27	H28	H29	H30	H31	W1	W2
UKHab Code		h2a	h2a	h2a	w34	w34	w34	w34	w34	w34	w34	w34	w34	w34	w34	h2a	w1f	w1f
Length (m)		87	64	93	557	180	68	61	98	82	109	244	105	75	88	86	n/a	n/a
Common name	Scientific name																	
Sycamore	<i>Acer pseudoplatanus</i>						T						T					
Black Alder	<i>Alnus glutinosa</i>					T											T	
Silver Birch	<i>Betula pendula</i>					T			T		T	T					T	
Rosebay Willowherb	<i>Chamerion angustifolium</i>																	
Common Dogwood	<i>Cornus sanguinea</i>																	
Common Hazel	<i>Corylus avellana</i>	✓	✓	✓	U	U	T	U	T		T	T	T	U		✓	T	T
Common Hawthorn	<i>Crataegus monogyna</i>	✓			U					U					T		T	
European Ash	<i>Fraxinus excelsior</i>				T	U						T					T	T
Common Ivy	<i>Hedera helix</i>							U										
Common Holly	<i>Ilex aquifolium</i>		✓	✓	U	U	U	T		U	T	T	T		T		T	T
Common Honeysuckle	<i>Lonicera periclymenum</i>																	
European Crab Apple	<i>Malus sylvestris</i>				U													
Blackthorn	<i>Prunus spinosa</i>	✓		✓		U				U		T				✓		
Bracken	<i>Pteridium aquilinum</i>																	
Pedunculate Oak	<i>Quercus robur</i>			T	T	T		T	T	T	T	T		T			T	
Oak sp.	<i>Quercus sp.</i>																	T
Dog Rose	<i>Rosa canina</i>							U				U						
Rose sp.	<i>Rosa sp.</i>																	
Bramble	<i>Rubus fruticosus</i>															✓	U	
Grey Willow	<i>Salix cinerea</i>					U					T							
Willow sp.	<i>Salix sp.</i>																	T
Elder	<i>Sambucus nigra</i>																	
Climbing Nightshade	<i>Solanum dulcamara</i>																	
Rowan	<i>Sorbus aucuparia</i>					U												
Black Bryony	<i>Tamus communis</i>																	
Common Gorse	<i>Ulex europaeus</i>																	

## Appendix VI. Botany checklist for all linear habitats (hedgerows, Lines of Trees and watercourses)

Herbs		Hedgerows and Lines of Trees													Streams			
Common Name	Scientific Name	H1	H2	H3	H5	H6	H8	H11	H12	H13	H16	H20	H21	H23	S1	S2	S4.1	S6.1
Wild Angelica	<i>Angelica sylvestris</i>																	✓
Lady Fern	<i>Athyrium filix-femina</i>								✓								✓	
Hard Fern	<i>Blechnum spicant</i>												✓					
Water Starwort sp.	<i>Callitriche sp.</i>															✓		
Bittercress sp.	<i>Cardamine sp.</i>															✓		
Rosebay Willowherb	<i>Chamerion angustifolium</i>							✓										
Field Thistle	<i>Cirsium arvense</i>	✓																
Marsh Thistle	<i>Cirsium palustre</i>							✓	✓								✓	✓
Common Foxglove	<i>Digitalis purpurea</i>		✓	✓				✓		✓	✓							
Male Fern	<i>Dryopteris filix-mas</i>		✓															✓
Willowherb sp.	<i>Epilobium sp.</i>								✓								✓	
Great Hairy Willowherb	<i>Epilobium hirsutum</i>								✓								✓	✓
Marsh Willowherb	<i>Epilobium palustre</i>																	✓
Square-stalked Willowherb	<i>Epilobium tetragonum</i>														✓			
Field Horsetail	<i>Equisetum arvense</i>																	✓
Herb Robert	<i>Geranium robertianum</i>			✓														
Common Ivy	<i>Hedera helix</i>	✓	✓	✓	✓		✓			✓			✓					
English Bluebell	<i>Hyacinthoides non-scripta</i>											✓						
Floating Pennywort	<i>Hydrocotyle ranunculoides</i>														✓			
St. Peter's wort	<i>Hypericum perforatum</i>																	✓
Gypsywort	<i>Lycopus europaeus</i>																	✓
Yellow Pimpernel	<i>Lysimachia nemorum</i>	✓																
Field Mint	<i>Mentha arvensis</i>																	✓
Blinks	<i>Montia fontana</i>															✓		
Hemlock Water Drop Wort	<i>Oenanthe crocata</i>								✓								✓	
Mild water pepper	<i>Persicaria hydropiper</i>																	✓
Tormentil	<i>Potentilla erecta</i>																	✓
Bracken	<i>Pteridium aquilinum</i>	✓	✓	✓	✓		✓											
Common Fleabane	<i>Pulicaria dysenterica</i>									✓								
Pedunculate Oak (seedling)	<i>Quercus robur</i>						✓											
Lesser Spearwort	<i>Ranunculus flammula</i>															✓		
Creeping Buttercup	<i>Ranunculus repens</i>													✓				
Bramble	<i>Rubus fruticosus</i>				✓		✓	✓	✓		✓		✓	✓			✓	✓
Rock Soapwort	<i>Saponaria ocymoides</i>					✓												
Red Campion	<i>Silene dioica</i>	✓							✓								✓	
Climbing Nightshade	<i>Solanum dulcamara</i>							✓										
Common Chickweed	<i>Stellaria media</i>								✓								✓	✓
Marsh Stitchwort	<i>Stellaria palustris</i>		✓															
Black Bryony	<i>Tamus communis</i>	✓								✓								
Fern sp.	<i>Unspecified fern species</i>										✓			✓				
Common Nettle	<i>Urtica dioica</i>	✓	✓		✓	✓			✓				✓	✓			✓	
BrooklimeB17:NB11:S45	<i>Veronica beccabunga</i>															✓		✓

# Appendix VII (a). Breeding bird survey results table (2023 surveys only)

Common name	Scientific name	BTO Species Code	BoCCS	Schedule 1	Annex 1	S41 (NERC Act)	Final BTO Breeding Code	Breeding status	Survey 1				Survey 2				Survey 3				Survey 4			
									Site	Flyover	50m buffer	BTO Breeding Code	Site	Flyover	50m buffer	BTO Breeding Code	Site	Flyover	50m buffer	BTO Breeding Code	Site	Flyover	50m buffer	BTO Breeding Code
Canada Goose	<i>Branta canadensis</i>	CD	Introduced				F	non-breeding		2		F				F				-				-
Mallard	<i>Anas platyrhynchos</i>	MA	AMBER				F	non-breeding				-		1		F				-				-
Common Swift	<i>Apus apus</i>	SI	RED				LO	non-breeding				-				-				-	1			LO
Common Cuckoo	<i>Cuculus canorus</i>	CU	RED			Y	S	possible				-			1	S				-				-
Stock Dove	<i>Columba oenas</i>	SD	AMBER				S	possible	1			S	3			H				-				-
Common Wood Pigeon	<i>Columba palumbus</i>	WP	AMBER				S	possible	3	1		H	1	1		S	2			H				-
Eurasian Collared Dove	<i>Streptopelia decaocto</i>	CD	GREEN				S	possible	1		1	S				-				-				-
European Herring Gull	<i>Larus argentatus</i>	HG	RED			Y	F	non-breeding				-		1		F				-				-
Lesser Black-backed Gull	<i>Larus fuscus</i>	LB	AMBER				F	non-breeding				-		1		F			1	F				-
Red Kite	<i>Milvus milvus</i>	KT	GREEN	Y	Y		H	possible	1			H				-				-				-
Common Buzzard	<i>Buteo buteo</i>	BZ	GREEN				H	possible				-			1	H	1			H	1	1		H
Great Spotted Woodpecker	<i>Dendrocopos major</i>	GS	GREEN				F	non-breeding				-				-			1	F				-
European Green Woodpecker	<i>Picus viridis</i>	G.	GREEN				H	possible	1			S	1			H				-				-
Eurasian Jay	<i>Garrulus glandarius</i>	J.	GREEN				P	probable	2			P		1		F	1			H				-
Eurasian Magpie	<i>Pica pica</i>	MG	GREEN				P	probable	2			P				-				-				-
Western Jackdaw	<i>Coloeus monedula</i>	JD	GREEN				H	possible				-	17	4		H				-				-
Carriion Crow	<i>Corvus corone</i>	C.	GREEN				H	possible		3		F	1	1		H	1			H				-
Northern Raven	<i>Corvus corax</i>	RN	GREEN				H	possible		1		F	2	3		H			1	F				-
Coal Tit	<i>Parus ater</i>	CT	GREEN				T	probable				-	2			S				-	2			S
Eurasian Blue Tit	<i>Cyanistes caeruleus</i>	BT	GREEN				S	possible	3			S	4			H	2			H	4			H
Great Tit	<i>Parus major</i>	GT	GREEN				FF	confirmed	4		1	T	5		1	T	4			FF				-
Eurasian Skylark	<i>Alauda arvensis</i>	S.	RED			Y	S	possible				-			1	S			1	S	1		1	B
Barn Swallow	<i>Hirundo rustica</i>	SL	GREEN				LO	non-breeding	1	1		LO	4	1		LO	2			LO	8			LO
Common House Martin	<i>Delichon urbicum</i>	HM	RED				LO	non-breeding	7			LO		3		F				-	5			LO
Long-tailed Tit	<i>Aegithalos caudatus</i>	LT	GREEN				H	possible	3			H	2			H				-				-
Willow Warbler	<i>Phylloscopus trachilus</i>	WW	AMBER				T	probable	2		1	S	1		1	S	2			S				-
Common Chiffchaff	<i>Phylloscopus collybita</i>	CC	GREEN				A	probable	1		1	S	2			S	1			A				-
Eurasian Blackcap	<i>Sylvia atricapilla</i>	BC	GREEN				T	probable	2		2	S	1			S	1		1	S			1	S
Garden Warbler	<i>Sylvia borin</i>	GW	GREEN				S	possible				-	1			S				-				-
Goldcrest	<i>Regulus regulus</i>	GC	GREEN				T	probable	1		1	S	2			S	4			T	2		1	H
Eurasian Wren	<i>Troglodytes troglodyte</i>	WR	AMBER				T	probable	6		1	T	6		2	T	7		1	T	10			A
Eurasian Nuthatch	<i>Sitta europaea</i>	NH	GREEN				H	possible	1			H				-				-				-
Eurasian Treecreeper	<i>Certhia familiaris</i>	TC	GREEN				S	possible				-	1			S	1			S	2			H
Common Starling	<i>Sturnus vulgaris</i>	SG	RED			Y	H	possible				-		3		F				-	5			H
Song Thrush	<i>Turdus philomelos</i>	ST	AMBER			Y	T	probable	4		2	T	2		1	T	2	1	3	T	3			T
Mistle Thrush	<i>Turdus viscivorus</i>	MT	RED				A	probable	4			S	2		2	P	3			A	5			H
Common Blackbird	<i>Turdus merula</i>	B.	GREEN				FF	confirmed	11			P	7		1	FF	8		2	A	4			P
Spotted Flycatcher	<i>Muscicapa striata</i>	SF	RED			Y	T	probable				-	1			S			1	S				-
European Robin	<i>Erithacus rubecula</i>	R.	GREEN				FL	confirmed	8		3	T	11			T	8			T	3			FL
House Sparrow	<i>Passer domesticus</i>	HS	RED			Y	H	possible				-	3			H				-				-
Duncock	<i>Prunella modularis</i>	D.	AMBER			Y	T	probable	3		1	T	4		1	T	3			T	1			S
White Wagtail	<i>Motacilla alba</i>	PW	GREEN				F	non-breeding				-				-				-		1		F
Meadow Pipit	<i>Anthus pratensis</i>	MP	AMBER				FF	confirmed	4			D	1		1	S	3		1	T	5		1	FF
Common Chaffinch	<i>Fringilla coelebs</i>	CH	GREEN				T	probable				-	3			T	3			T			1	H
Eurasian Bullfinch	<i>Pyrrhula pyrrhula</i>	BF	AMBER			Y	H	possible	1			H	1			H	1			H				-
European Greenfinch	<i>Chloris chloris</i>	GF	RED				T	probable	3			H	1			S	1			H	5			S
Common Linnet	<i>Linaria cannabina</i>	LI	RED			Y	S	possible	5	6		S		1		F			1	F				-
Red Crossbill	<i>Loxia curvirostra</i>	CR	GREEN	Y			F	non-breeding				-				-				-		1		F
European Goldfinch	<i>Carduelis carduelis</i>	GO	GREEN				T	probable	4		1	S		2		F	1	1		H	15		2	S
Eurasian Siskin	<i>Spinus spinus</i>	SK	GREEN				H	possible				-		3		F	1			H		3		F

## Appendix VII (b). Winter bird survey results table (2022/2023 survey only)

Common name	Scientific name	BoCCS	Schedule 1	Annex 1	S41 (NERC Act)	BTO Species Code	Survey 1				Survey 2				Survey 3			
							Hedge & Trees	Grassland	Flyover	50m buffer	Hedge & Trees	Grassland	Flyover	50m buffer	Hedge & Trees	Grassland	Flyover	50m buffer
Common Wood Pigeon	<i>Columba palumbus</i>	AMBER				WP			64		8							
European Herring Gull	<i>Larus argentatus</i>	RED			Y	HG											30	
Eurasian Sparrowhawk	<i>Accipiter nisus</i>	AMBER				SH									1			
Red Kite	<i>Milvus milvus</i>	GREEN	Y	Y		KT			1									
Common Buzzard	<i>Buteo buteo</i>	GREEN				BZ							1		2			
Great Spotted Woodpecker	<i>Dendrocopos major</i>	GREEN				GS	1				1							
European Green Woodpecker	<i>Picus viridis</i>	GREEN				G.	1							1				
Eurasian Jay	<i>Garrulus glandarius</i>	GREEN				J.	4											
Western Jackdaw	<i>Coloeus monedula</i>	GREEN				JD			6									
Carion Crow	<i>Corvus corone</i>	GREEN				C.	1				1							
Northern Raven	<i>Corvus corax</i>	GREEN				RN	2		1				1				1	
Eurasian Blue Tit	<i>Cyanistes caeruleus</i>	GREEN				BT	1				2							
Great Tit	<i>Parus major</i>	GREEN				GT	3											
Goldcrest	<i>Regulus regulus</i>	GREEN				GC					2							
Eurasian Wren	<i>Troglodytes troglodytes</i>	AMBER				WR	4			1	2				2			
Eurasian Nuthatch	<i>Sitta europaea</i>	GREEN				NH	1											
Eurasian Treecreeper	<i>Certhia familiaris</i>	GREEN				TC					1							
Common Starling	<i>Sturnus vulgaris</i>	RED			Y	SG	5		4									
Song Thrush	<i>Turdus philomelos</i>	AMBER			Y	ST					1	1 (Field 4)			1			
Mistle Thrush	<i>Turdus viscivorus</i>	RED				MT	3				2	3 (Field 2)			2	1 (Field 8)		
Redwing	<i>Turdus iliacus</i>	AMBER	Y			RE	15				8	3 (Field 2)			25			
Common Blackbird	<i>Turdus merula</i>	GREEN				B.	7			1	5				5			
Fieldfare	<i>Turdus pilaris</i>	RED	Y			FF	10											
European Robin	<i>Erithacus rubecula</i>	GREEN				R.	10				3	1 (Field 2)			2			
European Stonechat	<i>Saxicola rubicola</i>	GREEN				SC	2											
Dunnock	<i>Prunella modularis</i>	AMBER			Y	D.					1				1			
White Wagtail	<i>Motacilla alba</i>	GREEN				PW							2					
Meadow Pipit	<i>Anthus pratensis</i>	AMBER				MP	13	1 (Field 1)					11	1	10			
Common Chaffinch	<i>Fringilla coelebs</i>	GREEN				CH	2		2		1							
Common Linnet	<i>Linaria cannabina</i>	RED			Y	LI			1									
Lesser Redpoll	<i>Acanthis cabaret</i>	RED			Y	LR			1									
European Goldfinch	<i>Carduelis carduelis</i>	GREEN				GO	1		2									
Eurasian Siskin	<i>Spinus spinus</i>	GREEN				SK	1		2		1		4		1			

## Appendix VIII (a). Botanical quadrat location (Ilex Ecology, 2025)





**Appendix VIII (b). Bat survey transect route and logger locations.**



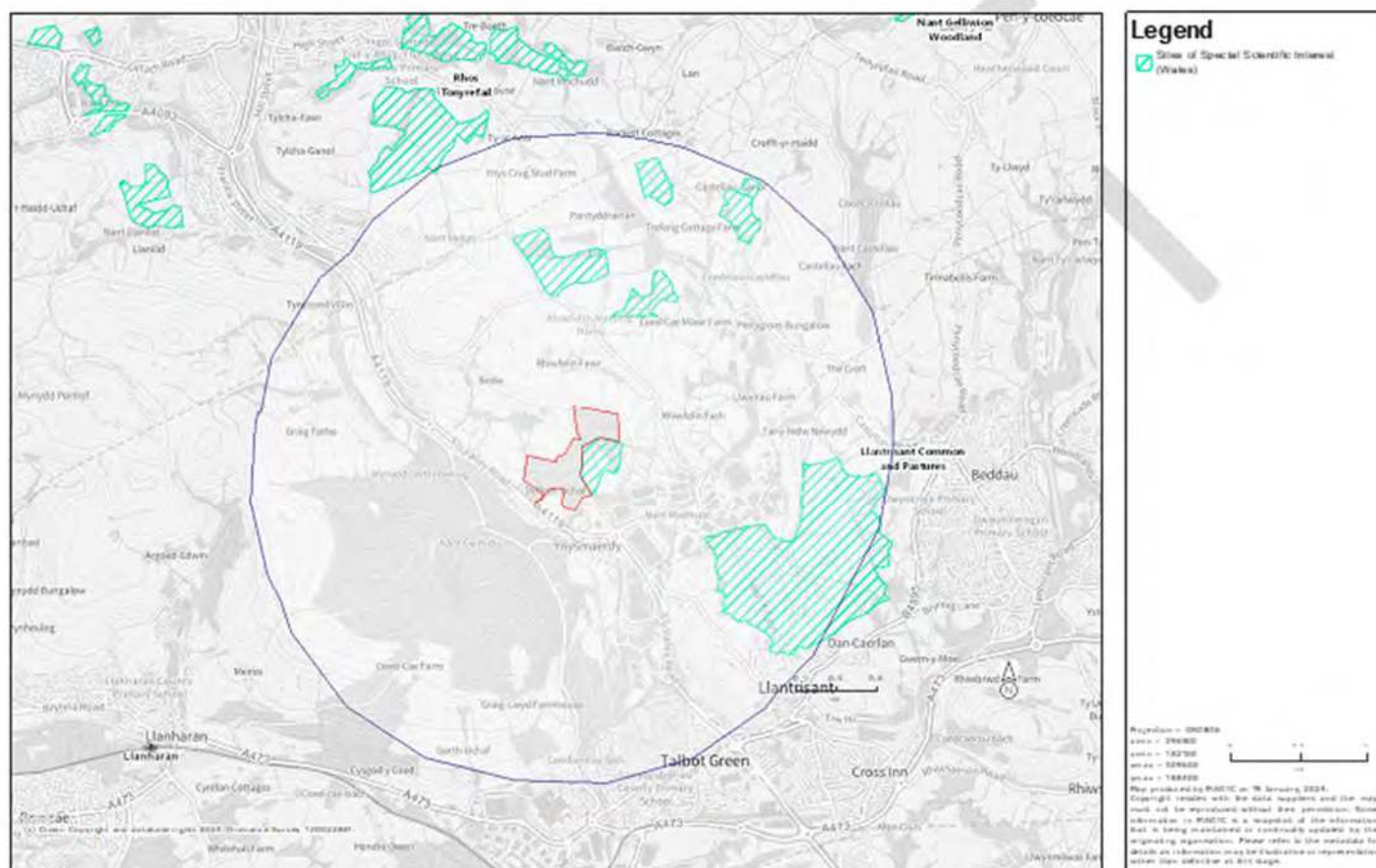
**Appendix IX (a). Ponds and waterways within 250m of The Site boundary**







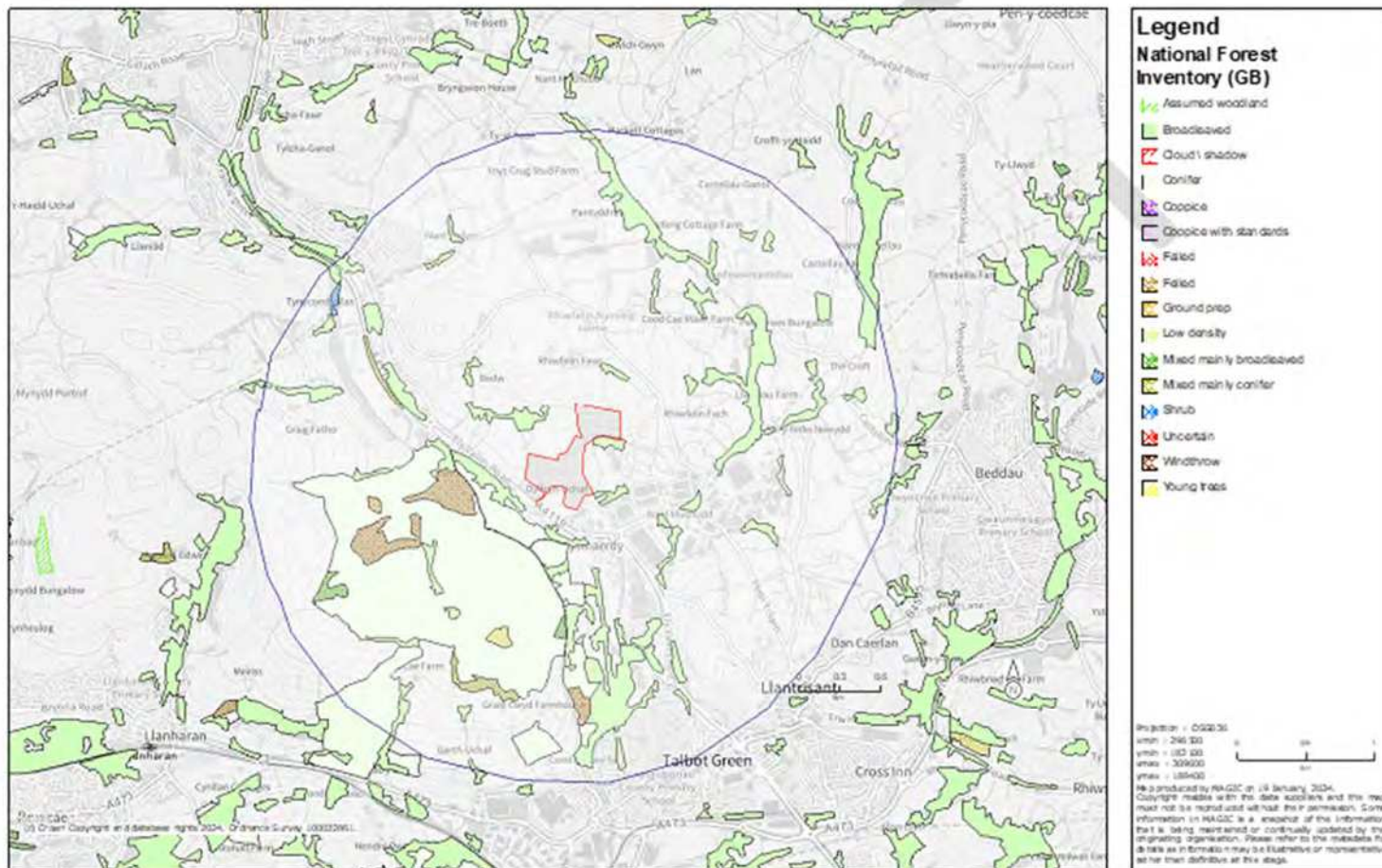




# Appendix IX (d). National Forest Inventory within 2km of The Site boundary

MAGiC

## National Forest Inventory within 2 km



## Appendix X (a). LERC Wales data: notable terrestrial mammal records with 2km of The Site boundary

[illegible]

# Appendix X (b). LERC Wales data: notable bird records with 2km of The Site boundary

Common name	Scientific name	Distance (m)	Sensitive	Date	Grid Reference (Public)	Latitude	Longitude	Status
Goshawk	Accipiter gentilis	1592	yes	23/03/2020	ST08			WCA1, WCA6, CITES, LBAP(CLY, CON, POW, VOG), LI(BIS), WS, P
Goshawk	Accipiter gentilis	1713	yes	15/01/2019	ST08			WCA1, WCA6, CITES, LBAP(CLY, CON, POW, VOG), LI(BIS), WS, P
Goshawk	Accipiter gentilis	1851	yes	20/04/2023	ST08			WCA1, WCA6, CITES, LBAP(CLY, CON, POW, VOG), LI(BIS), WS, P
Long-tailed Tit	Aegithales caudatus	732	no	2008 - 2023	ST0285	51.556924	-3.40787	WBAAm(RSPB)
Long-tailed Tit	Aegithales caudatus	760	no	2017 - 2022	ST0384	51.551108	-3.39318	WBAAm(RSPB)
Long-tailed Tit	Aegithales caudatus	808	no	27/09/2023	ST023851	51.556752	-3.40994	WBAAm(RSPB)
Long-tailed Tit	Aegithales caudatus	827	no	01/10/2020	ST024847	51.553174	-3.40838	WBAAm(RSPB)
Long-tailed Tit	Aegithales caudatus	945	no	2013 - 2021	ST0284	51.550935	-3.40759	WBAAm(RSPB)
Long-tailed Tit	Aegithales caudatus	1476	no	17/12/2020	ST0286	51.558913	-3.40815	WBAAm(RSPB)
Long-tailed Tit	Aegithales caudatus	1504	no	2014 - 2018	ST0484	51.551278	-3.37876	WBAAm(RSPB)
Long-tailed Tit	Aegithales caudatus	1511	no	25/12/2020	ST043842	51.549005	-3.38085	WBAAm(RSPB)
Long-tailed Tit	Aegithales caudatus	1769	no	02/01/2021	ST017862	51.566535	-3.4189	WBAAm(RSPB)
Long-tailed Tit	Aegithales caudatus	1851	no	2010 - 2023	ST08M	51.555857	-3.37168	WBAAm(RSPB)
Long-tailed Tit	Aegithales caudatus	1940	no	14/03/2023	ST0475584077	51.547519	-3.37497	WBAAm(RSPB)
Long-tailed Tit	Aegithales caudatus	1952	no	2023	ST047840	51.547275	-3.37503	WBAAm(RSPB)
Skylark	Alauda arvensis	700	no	14/05/2022	ST037855	51.560589	-3.38986	BOK22, S7, WBAAm(RSPB), UKBR(RSPB), LBAP(ANG, BBNP, CER, CLY, CON, CRM, DEN, GWY, PEM, POW, SNP, TRF, VOG), LI(BIS), WS, C
Skylark	Alauda arvensis	1583	no	14/05/2023	ST046846	51.552652	-3.37664	BOK22, S7, WBAAm(RSPB), UKBR(RSPB), LBAP(ANG, BBNP, CER, CLY, CON, CRM, DEN, GWY, PEM, POW, SNP, TRF, VOG), LI(BIS), WS, C
Skylark	Alauda arvensis	1619	no	02/04/2017	ST046845	51.551753	-3.37661	BOK22, S7, WBAAm(RSPB), UKBR(RSPB), LBAP(ANG, BBNP, CER, CLY, CON, CRM, DEN, GWY, PEM, POW, SNP, TRF, VOG), LI(BIS), WS, C
Skylark	Alauda arvensis	1758	no	2024	ST046842	51.549056	-3.37653	BOK22, S7, WBAAm(RSPB), UKBR(RSPB), LBAP(ANG, BBNP, CER, CLY, CON, CRM, DEN, GWY, PEM, POW, SNP, TRF, VOG), LI(BIS), WS, C
Skylark	Alauda arvensis	1843	no	30/05/2024	ST047842	51.549073	-3.37509	BOK22, S7, WBAAm(RSPB), UKBR(RSPB), LBAP(ANG, BBNP, CER, CLY, CON, CRM, DEN, GWY, PEM, POW, SNP, TRF, VOG), LI(BIS), WS, C
Skylark	Alauda arvensis	1851	no	2010 - 2023	ST08M	51.555857	-3.37168	BOK22, S7, WBAAm(RSPB), UKBR(RSPB), LBAP(ANG, BBNP, CER, CLY, CON, CRM, DEN, GWY, PEM, POW, SNP, TRF, VOG), LI(BIS), WS, C
Skylark	Alauda arvensis	1872	no	14/03/2022	ST0488184448	51.550875	-3.37325	BOK22, S7, WBAAm(RSPB), UKBR(RSPB), LBAP(ANG, BBNP, CER, CLY, CON, CRM, DEN, GWY, PEM, POW, SNP, TRF, VOG), LI(BIS), WS, C
Skylark	Alauda arvensis	1930	no	03/07/2015	ST048842	51.54909	-3.37364	BOK22, S7, WBAAm(RSPB), UKBR(RSPB), LBAP(ANG, BBNP, CER, CLY, CON, CRM, DEN, GWY, PEM, POW, SNP, TRF, VOG), LI(BIS), WS, C
Skylark	Alauda arvensis	1952	no	2023	ST047840	51.547275	-3.37503	BOK22, S7, WBAAm(RSPB), UKBR(RSPB), LBAP(ANG, BBNP, CER, CLY, CON, CRM, DEN, GWY, PEM, POW, SNP, TRF, VOG), LI(BIS), WS, C
Kingfisher	Alcedo atthis	567	no	12/01/2025	ST029846	51.552361	-3.40115	BOK1, WCA1, Bem, WBAAm(RSPB), LBAP(CLY, CON, DEN, GWY, POW, TRAJ, LI(BIS), WS, C
Kingfisher	Alcedo atthis	732	no	28/06/2021	ST0285	51.559924	-3.40787	BOK1, WCA1, Bem, WBAAm(RSPB), LBAP(CLY, CON, DEN, GWY, POW, TRAJ, LI(BIS), WS, C
Kingfisher	Alcedo atthis	1365	no	26/07/2021	ST0386	51.569085	-3.39373	BOK1, WCA1, Bem, WBAAm(RSPB), LBAP(CLY, CON, DEN, GWY, POW, TRAJ, LI(BIS), WS, C
Mallard	Anas platyrhynchos	470	no	15/04/2021	ST0385	51.560096	-3.39345	BOK21, WBAAm(RSPB), LBAP(CON, GWY), LI(BIS)
Mallard	Anas platyrhynchos	732	no	2008 - 2023	ST0285	51.559924	-3.40787	BOK21, WBAAm(RSPB), LBAP(CON, GWY), LI(BIS)
Mallard	Anas platyrhynchos	760	no	2017 - 2022	ST0384	51.551108	-3.39318	BOK21, WBAAm(RSPB), LBAP(CON, GWY), LI(BIS)
Mallard	Anas platyrhynchos	808	no	2023	ST023851	51.556752	-3.40994	BOK21, WBAAm(RSPB), LBAP(CON, GWY), LI(BIS)
Mallard	Anas platyrhynchos	993	no	17/02/2021	ST04148507	51.556386	-3.38403	BOK21, WBAAm(RSPB), LBAP(CON, GWY), LI(BIS)
Mallard	Anas platyrhynchos	1001	no	09/10/2018	ST041850	51.556162	-3.38395	BOK21, WBAAm(RSPB), LBAP(CON, GWY), LI(BIS)
Mallard	Anas platyrhynchos	1214	no	28/04/2023	ST042846	51.552584	-3.3824	BOK21, WBAAm(RSPB), LBAP(CON, GWY), LI(BIS)
Mallard	Anas platyrhynchos	1952	no	2023	ST047840	51.547275	-3.37503	BOK21, WBAAm(RSPB), LBAP(CON, GWY), LI(BIS)
Meadow Pipit	Anthus pratensis	1386	no	2019	ST0433084440	51.55071	-3.38119	Bem, WBAAm(RSPB), LBAP(CON, LI(BIS)
Meadow Pipit	Anthus pratensis	1397	no	05/06/2019	ST043844	51.550803	-3.38091	Bem, WBAAm(RSPB), LBAP(CON, LI(BIS)
Meadow Pipit	Anthus pratensis	1504	no	1967 - 2023	ST0484	51.551278	-3.37876	Bem, WBAAm(RSPB), LBAP(CON, LI(BIS)
Meadow Pipit	Anthus pratensis	1511	no	25/12/2020	ST043842	51.549005	-3.38085	Bem, WBAAm(RSPB), LBAP(CON, LI(BIS)
Meadow Pipit	Anthus pratensis	1620	no	2017	ST0433084060	51.547294	-3.38109	Bem, WBAAm(RSPB), LBAP(CON, LI(BIS)
Meadow Pipit	Anthus pratensis	1686	no	2018	ST0440984048	51.5472	-3.37995	Bem, WBAAm(RSPB), LBAP(CON, LI(BIS)
Meadow Pipit	Anthus pratensis	1758	no	02/06/2024	ST046842	51.549056	-3.37653	Bem, WBAAm(RSPB), LBAP(CON, LI(BIS)
Meadow Pipit	Anthus pratensis	1840	no	2017	ST0476484281	51.549354	-3.37489	Bem, WBAAm(RSPB), LBAP(CON, LI(BIS)
Meadow Pipit	Anthus pratensis	1843	no	30/05/2024	ST047842	51.549073	-3.37509	Bem, WBAAm(RSPB), LBAP(CON, LI(BIS)
Meadow Pipit	Anthus pratensis	1851	no	2009 - 2023	ST08M	51.555857	-3.37168	Bem, WBAAm(RSPB), LBAP(CON, LI(BIS)
Meadow Pipit	Anthus pratensis	1896	no	14/03/2022	ST0485184326	51.549773	-3.37365	Bem, WBAAm(RSPB), LBAP(CON, LI(BIS)
Meadow Pipit	Anthus pratensis	1930	no	2015	ST048842	51.54909	-3.37364	Bem, WBAAm(RSPB), LBAP(CON, LI(BIS)
Meadow Pipit	Anthus pratensis	1933	no	13/09/2023	ST046839	51.54636	-3.37645	Bem, WBAAm(RSPB), LBAP(CON, LI(BIS)
Meadow Pipit	Anthus pratensis	1952	no	2023	ST047840	51.547275	-3.37503	Bem, WBAAm(RSPB), LBAP(CON, LI(BIS)
Tree Pipit	Anthus trivialis	945	no	24/05/2015	ST0284	51.550935	-3.40759	S7, Bem, WBAAm(RSPB), UKBR(RSPB), LBAP(CON, DEN, GWY, POW, VOG), LI(BIS), WS, C
Tree Pipit	Anthus trivialis	1365	no	18/07/2016	ST0386	51.569085	-3.39373	S7, Bem, WBAAm(RSPB), UKBR(RSPB), LBAP(CON, DEN, GWY, POW, VOG), LI(BIS), WS, C
Tree Pipit	Anthus trivialis	1791	no	15/06/2019	ST0184	51.550762	-3.42201	S7, Bem, WBAAm(RSPB), UKBR(RSPB), LBAP(CON, DEN, GWY, POW, VOG), LI(BIS), WS, C
Tree Pipit	Anthus trivialis	1795	no	30/05/2022	ST047843	51.549972	-3.37511	S7, Bem, WBAAm(RSPB), UKBR(RSPB), LBAP(CON, DEN, GWY, POW, VOG), LI(BIS), WS, C
Swift	Apus apus	586	no	20/05/2017	ST03218459	51.551913	-3.39731	WBAAm(RSPB), LBAP(BRG, RCT, VOG), LI(BIS)
Swift	Apus apus	1365	no	18/07/2016	ST0386	51.569085	-3.39373	WBAAm(RSPB), LBAP(BRG, RCT, VOG), LI(BIS)
Swift	Apus apus	1504	no	1967 - 2019	ST0484	51.551278	-3.37876	WBAAm(RSPB), LBAP(BRG, RCT, VOG), LI(BIS)
Swift	Apus apus	1772	no	15/08/2018	ST035834	51.541678	-3.39217	WBAAm(RSPB), LBAP(BRG, RCT, VOG), LI(BIS)
Swift	Apus apus	1851	no	2014 - 2023	ST08M	51.555857	-3.37168	WBAAm(RSPB), LBAP(BRG, RCT, VOG), LI(BIS)
Swift	Apus apus	1857	no	08/06/2022	ST045839	51.546343	-3.37789	WBAAm(RSPB), LBAP(BRG, RCT, VOG), LI(BIS)
Grey Heron	Ardea cinerea	1713	no	2002 - 2021	ST0383	51.542119	-3.3929	WBAAm(RSPB), LBAP(BRG, RCT), LI(BIS)



Common name	Scientific name	Distance (m)	Sensitive	Date	Grid Reference (Public)	Latitude	Longitude	Status
Canada Goose	<i>Branta canadensis</i>	1571	no	06/05/2021	ST047840	51.547181	-3.38224	BCK21, WCAE, INAS
Canada Goose	<i>Branta canadensis</i>	1952	no	2023	ST047840	51.547275	-3.37503	BCK21, WCAE, INAS
Nighthawk	<i>Caprimulgus vociferans</i>	936	no	26/04/2018	ST022849	51.554937	-3.41132	BCK1, ST, Ben, WBAm(RSPB), LBAP(BBNP), CER, CLY, CON, CRM, DEN, GWY, MON, PEM, POW, SNP, VOG, LI(BIS), LI(VCA3), WS, P
Greenfinch	<i>Chloris chloris</i>	945	no	16/05/2021	ST0284	51.550935	-3.40759	Ben, WBAm(RSPB), LBAP(CON, POW, LI(BIS)
Greenfinch	<i>Chloris chloris</i>	1504	no	2014 - 2019	ST0484	51.551278	-3.37876	Ben, WBAm(RSPB), LBAP(CON, POW, LI(BIS)
Greenfinch	<i>Chloris chloris</i>	1533	no	01/08/2017	ST0379083752	51.544703	-3.3888	Ben, WBAm(RSPB), LBAP(CON, POW, LI(BIS)
Greenfinch	<i>Chloris chloris</i>	1713	no	2002 - 2021	ST0383	51.542119	-3.3929	Ben, WBAm(RSPB), LBAP(CON, POW, LI(BIS)
Greenfinch	<i>Chloris chloris</i>	1732	no	14/03/2023	ST0481884685	51.552995	-3.37422	Ben, WBAm(RSPB), LBAP(CON, POW, LI(BIS)
Greenfinch	<i>Chloris chloris</i>	1851	no	2009 - 2023	ST08M	51.555857	-3.37168	Ben, WBAm(RSPB), LBAP(CON, POW, LI(BIS)
Greenfinch	<i>Chloris chloris</i>	1952	no	2023	ST047840	51.547275	-3.37503	Ben, WBAm(RSPB), LBAP(CON, POW, LI(BIS)
Black-headed Gull	<i>Chroicocephalus ridibundus</i>	1952	no	01/01/2023	ST047840	51.547275	-3.37503	BCK25, ST, WBAm(RSPB), LBAP(GWY, VOG), LI(BIS)
Dipper	<i>Cinclus cinclus</i>	732	no	2021 - 2023	ST0285	51.559924	-3.40787	Ben, WBAm(RSPB), LBAP(BRG, CLY, CON, MTR, POW, RCT, TRA), LI(BIS)
Dipper	<i>Cinclus cinclus</i>	760	no	2010 - 2022	ST0384	51.551108	-3.39318	Ben, WBAm(RSPB), LBAP(BRG, CLY, CON, MTR, POW, RCT, TRA), LI(BIS)
Dipper	<i>Cinclus cinclus</i>	808	no	2023	ST023851	51.556752	-3.40994	Ben, WBAm(RSPB), LBAP(BRG, CLY, CON, MTR, POW, RCT, TRA), LI(BIS)
Dipper	<i>Cinclus cinclus</i>	945	no	27/04/2019	ST0284	51.550935	-3.40759	Ben, WBAm(RSPB), LBAP(BRG, CLY, CON, MTR, POW, RCT, TRA), LI(BIS)
Dipper	<i>Cinclus cinclus</i>	955	no	2019	ST0407284902	51.554819	-3.38504	Ben, WBAm(RSPB), LBAP(BRG, CLY, CON, MTR, POW, RCT, TRA), LI(BIS)
Dipper	<i>Cinclus cinclus</i>	1173	no	2018 - 2019	ST0381284205	51.548509	-3.3886	Ben, WBAm(RSPB), LBAP(BRG, CLY, CON, MTR, POW, RCT, TRA), LI(BIS)
Dipper	<i>Cinclus cinclus</i>	1173	no	2019	ST0381384205	51.548509	-3.38858	Ben, WBAm(RSPB), LBAP(BRG, CLY, CON, MTR, POW, RCT, TRA), LI(BIS)
Dipper	<i>Cinclus cinclus</i>	1713	no	2002 - 2021	ST0383	51.542119	-3.3929	Ben, WBAm(RSPB), LBAP(BRG, CLY, CON, MTR, POW, RCT, TRA), LI(BIS)
Cuckoo	<i>Cuculus canorus</i>	1504	no	1967 - 2023	ST0484	51.551278	-3.37876	ST, WBR(RSPB), UKBR(RSPB), LBAP(CON, DEN, GWY, VOG), LI(BIS), WS, C
Cuckoo	<i>Cuculus canorus</i>	1712	no	28/04/2023	ST047845	51.55177	-3.37517	ST, WBR(RSPB), UKBR(RSPB), LBAP(CON, DEN, GWY, VOG), LI(BIS), WS, C
Cuckoo	<i>Cuculus canorus</i>	1809	no	07/05/2023	ST04638413	51.54802	-3.37671	ST, WBR(RSPB), UKBR(RSPB), LBAP(CON, DEN, GWY, VOG), LI(BIS), WS, C
Cuckoo	<i>Cuculus canorus</i>	1851	no	2014 - 2023	ST08M	51.555857	-3.37168	ST, WBR(RSPB), UKBR(RSPB), LBAP(CON, DEN, GWY, VOG), LI(BIS), WS, C
Whitethroat	<i>Curvica communis</i>	700	no	14/05/2022	ST037855	51.560589	-3.38986	WBR(RSPB), LBAP(CON, POW, LI(BIS)
Whitethroat	<i>Curvica communis</i>	1504	no	1967 - 2021	ST0484	51.551278	-3.37876	WBR(RSPB), LBAP(CON, POW, LI(BIS)
Whitethroat	<i>Curvica communis</i>	1549	no	2018	ST0430984142	51.548028	-3.38141	WBR(RSPB), LBAP(CON, POW, LI(BIS)
Whitethroat	<i>Curvica communis</i>	1699	no	13/07/2021	ST04658437	51.550181	-3.37649	WBR(RSPB), LBAP(CON, POW, LI(BIS)
Whitethroat	<i>Curvica communis</i>	1758	no	02/06/2024	ST046842	51.549056	-3.37653	WBR(RSPB), LBAP(CON, POW, LI(BIS)
Whitethroat	<i>Curvica communis</i>	1851	no	2010 - 2023	ST08M	51.555857	-3.37168	WBR(RSPB), LBAP(CON, POW, LI(BIS)
Whitethroat	<i>Curvica communis</i>	1930	no	03/07/2015	ST048842	51.54809	-3.37364	WBR(RSPB), LBAP(CON, POW, LI(BIS)
House Martin	<i>Delichon urbicum</i>	732	no	27/09/2023	ST0285	51.559924	-3.40787	Ben, LBAP(BRG, CON, POW, RCT, VOG), LI(BIS)
House Martin	<i>Delichon urbicum</i>	808	no	27/09/2023	ST023851	51.556752	-3.40994	Ben, LBAP(BRG, CON, POW, RCT, VOG), LI(BIS)
House Martin	<i>Delichon urbicum</i>	1504	no	1973 - 2019	ST0484	51.551278	-3.37876	Ben, LBAP(BRG, CON, POW, RCT, VOG), LI(BIS)
Reed Bunting	<i>Emberiza schoeniclus</i>	1313	no	05/06/2019	ST042844	51.550786	-3.38235	ST, Ben, WBAm(RSPB), LBAP(BBNP, CER, CLY, CON, DEN, GWY, PEM, POW, VOG), LI(BIS), WS, C
Reed Bunting	<i>Emberiza schoeniclus</i>	1365	no	2007 - 2016	ST0386	51.560985	-3.39373	ST, Ben, WBAm(RSPB), LBAP(BBNP, CER, CLY, CON, DEN, GWY, PEM, POW, VOG), LI(BIS), WS, C
Reed Bunting	<i>Emberiza schoeniclus</i>	1504	no	2005 - 2021	ST0484	51.551278	-3.37876	ST, Ben, WBAm(RSPB), LBAP(BBNP, CER, CLY, CON, DEN, GWY, PEM, POW, VOG), LI(BIS), WS, C
Reed Bunting	<i>Emberiza schoeniclus</i>	1511	no	25/12/2020	ST04842	51.549008	-3.38085	ST, Ben, WBAm(RSPB), LBAP(BBNP, CER, CLY, CON, DEN, GWY, PEM, POW, VOG), LI(BIS), WS, C
Reed Bunting	<i>Emberiza schoeniclus</i>	1715	no	13/07/2021	ST04648432	51.549728	-3.37662	ST, Ben, WBAm(RSPB), LBAP(BBNP, CER, CLY, CON, DEN, GWY, PEM, POW, VOG), LI(BIS), WS, C
Reed Bunting	<i>Emberiza schoeniclus</i>	1740	no	2018	ST0449384063	51.547349	-3.37874	ST, Ben, WBAm(RSPB), LBAP(BBNP, CER, CLY, CON, DEN, GWY, PEM, POW, VOG), LI(BIS), WS, C
Reed Bunting	<i>Emberiza schoeniclus</i>	1851	no	2009 - 2023	ST08M	51.555857	-3.37168	ST, Ben, WBAm(RSPB), LBAP(BBNP, CER, CLY, CON, DEN, GWY, PEM, POW, VOG), LI(BIS), WS, C
Reed Bunting	<i>Emberiza schoeniclus</i>	1952	no	01/01/2023	ST047840	51.547275	-3.37503	ST, Ben, WBAm(RSPB), LBAP(BBNP, CER, CLY, CON, DEN, GWY, PEM, POW, VOG), LI(BIS), WS, C
Reed Bunting	<i>Emberiza schoeniclus</i>	1975	no	25/04/2024	ST04998445	51.550957	-3.37161	ST, Ben, WBAm(RSPB), LBAP(BBNP, CER, CLY, CON, DEN, GWY, PEM, POW, VOG), LI(BIS), WS, C
Hobby	<i>Falco subbuteo</i>	1452	yes	08/04/2021	ST08			WCA1, Ben, CITES, LBAP(CON, GWY, POW, VOG), LI(BIS), LI(VCA3), WS, P
Kestrel	<i>Falco tinnunculus</i>	1504	no	1971 - 2023	ST0484	51.551278	-3.37876	ST, Ben, CITES, WBR(RSPB), LBAP(ANG, CLY, CON, DEN, GWY, PEM, POW, VOG), LI(BIS), LI(VCA3), WS, C
Kestrel	<i>Falco tinnunculus</i>	1713	no	2002 - 2022	ST0383	51.542119	-3.3929	ST, Ben, CITES, WBR(RSPB), LBAP(ANG, CLY, CON, DEN, GWY, PEM, POW, VOG), LI(BIS), LI(VCA3), WS, C
Kestrel	<i>Falco tinnunculus</i>	1851	no	2008 - 2015	ST08M	51.555857	-3.37168	ST, Ben, CITES, WBR(RSPB), LBAP(ANG, CLY, CON, DEN, GWY, PEM, POW, VOG), LI(BIS), LI(VCA3), WS, C
Brambling	<i>Fringilla monticola</i>	945	no	1990 - 2019	ST0284	51.550935	-3.40759	WCA1, WBAm(RSPB), LBAP(CON, LI(BIS)
Snipe	<i>Gallinago gallinago</i>	825	no	24/01/2022	ST054889	51.564133	-3.3943	BCK21, WBAm(RSPB), LBAP(ANG, CON, DEN, GWY, POW, LI(BIS), LI(VCA3), WS, C
Snipe	<i>Gallinago gallinago</i>	1851	no	20/04/2023	ST08M	51.555857	-3.37168	BCK21, WBAm(RSPB), LBAP(ANG, CON, DEN, GWY, POW, LI(BIS), LI(VCA3), WS, C
Snipe	<i>Gallinago gallinago</i>	1874	no	14/03/2023	ST0474384179	51.548434	-3.37517	BCK21, WBAm(RSPB), LBAP(ANG, CON, DEN, GWY, POW, LI(BIS), LI(VCA3), WS, C
Snipe	<i>Gallinago gallinago</i>	1952	no	2023	ST047840	51.547275	-3.37503	BCK21, WBAm(RSPB), LBAP(ANG, CON, DEN, GWY, POW, LI(BIS), LI(VCA3), WS, C
Swallow	<i>Hirundo rustica</i>	760	no	07/08/2021	ST0384	51.551108	-3.39318	Ben, WBAm(RSPB), LBAP(ANG, CON, GWY, POW, VOG), LI(BIS)
Swallow	<i>Hirundo rustica</i>	945	no	24/05/2015	ST0284	51.550935	-3.40759	Ben, WBAm(RSPB), LBAP(ANG, CON, GWY, POW, VOG), LI(BIS)
Swallow	<i>Hirundo rustica</i>	1365	no	18/07/2016	ST0386	51.560985	-3.39373	Ben, WBAm(RSPB), LBAP(ANG, CON, GWY, POW, VOG), LI(BIS)
Swallow	<i>Hirundo rustica</i>	1504	no	1967 - 2021	ST0484	51.551278	-3.37876	Ben, WBAm(RSPB), LBAP(ANG, CON, GWY, POW, VOG), LI(BIS)
Swallow	<i>Hirundo rustica</i>	1688	no	2000 - 2021	ST0185	51.55975	-3.42229	Ben, WBAm(RSPB), LBAP(ANG, CON, GWY, POW, VOG), LI(BIS)
Swallow	<i>Hirundo rustica</i>	1713	no	2008 - 2021	ST0383	51.542119	-3.3929	Ben, WBAm(RSPB), LBAP(ANG, CON, GWY, POW, VOG), LI(BIS)
Swallow	<i>Hirundo rustica</i>	1851	no	2009 - 2023	ST08M	51.555857	-3.37168	Ben, WBAm(RSPB), LBAP(ANG, CON, GWY, POW, VOG), LI(BIS)
Swallow	<i>Hirundo rustica</i>	1884	no	2002 - 2021	ST0486	51.569255	-3.3793	Ben, WBAm(RSPB), LBAP(ANG, CON, GWY, POW, VOG), LI(BIS)
Swallow	<i>Hirundo rustica</i>	1952	no	26/09/2023	ST047840	51.547275	-3.37503	Ben, WBAm(RSPB), LBAP(ANG, CON, GWY, POW, VOG), LI(BIS)

Common name	Scientific name	Distance (m)	Sensitive	Date	Grid Reference (Public)	Latitude	Longitude	Status
Herring Gull	Larus argentatus	470	no	15/04/2021	ST0385	51.560086	-3.39345	BOx22, ST, WBR(RSPB), UKBR(RSPB), LBAP(CON, GWY, POW, VOG), LI(BIS), WS, C
Herring Gull	Larus argentatus	732	no	31/12/2023	ST0285	51.559924	-3.40787	BOx22, ST, WBR(RSPB), UKBR(RSPB), LBAP(CON, GWY, POW, VOG), LI(BIS), WS, C
Herring Gull	Larus argentatus	760	no	2017 - 2021	ST0384	51.551108	-3.39318	BOx22, ST, WBR(RSPB), UKBR(RSPB), LBAP(CON, GWY, POW, VOG), LI(BIS), WS, C
Herring Gull	Larus argentatus	945	no	05/01/2020	ST0284	51.550935	-3.40759	BOx22, ST, WBR(RSPB), UKBR(RSPB), LBAP(CON, GWY, POW, VOG), LI(BIS), WS, C
Herring Gull	Larus argentatus	1200	no	18/08/2020	ST043850	51.556196	-3.38107	BOx22, ST, WBR(RSPB), UKBR(RSPB), LBAP(CON, GWY, POW, VOG), LI(BIS), WS, C
Herring Gull	Larus argentatus	1214	no	28/04/2023	ST042848	51.552584	-3.3824	BOx22, ST, WBR(RSPB), UKBR(RSPB), LBAP(CON, GWY, POW, VOG), LI(BIS), WS, C
Herring Gull	Larus argentatus	1365	no	18/07/2018	ST0386	51.569085	-3.39373	BOx22, ST, WBR(RSPB), UKBR(RSPB), LBAP(CON, GWY, POW, VOG), LI(BIS), WS, C
Herring Gull	Larus argentatus	1470	no	01/01/2021	ST0286	51.569913	-3.40815	BOx22, ST, WBR(RSPB), UKBR(RSPB), LBAP(CON, GWY, POW, VOG), LI(BIS), WS, C
Herring Gull	Larus argentatus	1511	no	25/12/2020	ST043842	51.549005	-3.38085	BOx22, ST, WBR(RSPB), UKBR(RSPB), LBAP(CON, GWY, POW, VOG), LI(BIS), WS, C
Herring Gull	Larus argentatus	1583	no	14/05/2023	ST046848	51.552652	-3.37664	BOx22, ST, WBR(RSPB), UKBR(RSPB), LBAP(CON, GWY, POW, VOG), LI(BIS), WS, C
Herring Gull	Larus argentatus	1713	no	2007 - 2020	ST0383	51.542119	-3.3929	BOx22, ST, WBR(RSPB), UKBR(RSPB), LBAP(CON, GWY, POW, VOG), LI(BIS), WS, C
Herring Gull	Larus argentatus	1851	no	2023	ST08M	51.555857	-3.37168	BOx22, ST, WBR(RSPB), UKBR(RSPB), LBAP(CON, GWY, POW, VOG), LI(BIS), WS, C
Herring Gull	Larus argentatus	1952	no	2023	ST047840	51.547275	-3.37503	BOx22, ST, WBR(RSPB), UKBR(RSPB), LBAP(CON, GWY, POW, VOG), LI(BIS), WS, C
Lesser Black-backed Gull	Larus fuscus	700	no	14/05/2022	ST037855	51.560589	-3.38986	BOx22, WBAm(RSPB), LBAP(CON, GWY, PEM, POW, SNP), LI(BIS), WS, C
Lesser Black-backed Gull	Larus fuscus	732	no	27/09/2023	ST0285	51.559924	-3.40787	BOx22, WBAm(RSPB), LBAP(CON, GWY, PEM, POW, SNP), LI(BIS), WS, C
Lesser Black-backed Gull	Larus fuscus	760	no	2017 - 2022	ST0384	51.551108	-3.39318	BOx22, WBAm(RSPB), LBAP(CON, GWY, PEM, POW, SNP), LI(BIS), WS, C
Lesser Black-backed Gull	Larus fuscus	808	no	27/09/2023	ST023851	51.556752	-3.40994	BOx22, WBAm(RSPB), LBAP(CON, GWY, PEM, POW, SNP), LI(BIS), WS, C
Lesser Black-backed Gull	Larus fuscus	945	no	16/05/2021	ST0284	51.550935	-3.40759	BOx22, WBAm(RSPB), LBAP(CON, GWY, PEM, POW, SNP), LI(BIS), WS, C
Lesser Black-backed Gull	Larus fuscus	1200	no	18/08/2020	ST043850	51.556196	-3.38107	BOx22, WBAm(RSPB), LBAP(CON, GWY, PEM, POW, SNP), LI(BIS), WS, C
Lesser Black-backed Gull	Larus fuscus	1214	no	28/04/2023	ST042848	51.552584	-3.3824	BOx22, WBAm(RSPB), LBAP(CON, GWY, PEM, POW, SNP), LI(BIS), WS, C
Lesser Black-backed Gull	Larus fuscus	1365	no	18/07/2018	ST0386	51.569085	-3.39373	BOx22, WBAm(RSPB), LBAP(CON, GWY, PEM, POW, SNP), LI(BIS), WS, C
Lesser Black-backed Gull	Larus fuscus	1851	no	2023	ST08M	51.555857	-3.37168	BOx22, WBAm(RSPB), LBAP(CON, GWY, PEM, POW, SNP), LI(BIS), WS, C
Lesser Black-backed Gull	Larus fuscus	1933	no	13/09/2023	ST046839	51.54636	-3.37645	BOx22, WBAm(RSPB), LBAP(CON, GWY, PEM, POW, SNP), LI(BIS), WS, C
Lesser Black-backed Gull	Larus fuscus	1952	no	2023	ST047840	51.547275	-3.37503	BOx22, WBAm(RSPB), LBAP(CON, GWY, PEM, POW, SNP), LI(BIS), WS, C
Lesser Black-backed Gull	Larus fuscus	1993	no	09/10/2020	ST051851	51.55723	-3.36956	BOx22, WBAm(RSPB), LBAP(CON, GWY, PEM, POW, SNP), LI(BIS), WS, C
Linnet	Linaria cannabina	700	no	14/05/2022	ST037855	51.560589	-3.38986	ST, Bem, WBR(RSPB), UKBR(RSPB), LBAP(ANG, BBNP, CER, CLY, CON, DEN, GWY, PEM, VOG), LI(BIS), WS, C
Linnet	Linaria cannabina	1365	no	18/07/2016	ST0386	51.569085	-3.39373	ST, Bem, WBR(RSPB), UKBR(RSPB), LBAP(ANG, BBNP, CER, CLY, CON, DEN, GWY, PEM, VOG), LI(BIS), WS, C
Linnet	Linaria cannabina	1433	no	2019	ST043584391	51.550274	-3.38082	ST, Bem, WBR(RSPB), UKBR(RSPB), LBAP(ANG, BBNP, CER, CLY, CON, DEN, GWY, PEM, VOG), LI(BIS), WS, C
Linnet	Linaria cannabina	1504	no	1967 - 2023	ST0484	51.551278	-3.37876	ST, Bem, WBR(RSPB), UKBR(RSPB), LBAP(ANG, BBNP, CER, CLY, CON, DEN, GWY, PEM, VOG), LI(BIS), WS, C
Linnet	Linaria cannabina	1550	no	2019	ST0431484146	51.548064	-3.38134	ST, Bem, WBR(RSPB), UKBR(RSPB), LBAP(ANG, BBNP, CER, CLY, CON, DEN, GWY, PEM, VOG), LI(BIS), WS, C
Linnet	Linaria cannabina	1570	no	2018	ST0433984144	51.548051	-3.38098	ST, Bem, WBR(RSPB), UKBR(RSPB), LBAP(ANG, BBNP, CER, CLY, CON, DEN, GWY, PEM, VOG), LI(BIS), WS, C
Linnet	Linaria cannabina	1758	no	02/06/2024	ST046842	51.549056	-3.37653	ST, Bem, WBR(RSPB), UKBR(RSPB), LBAP(ANG, BBNP, CER, CLY, CON, DEN, GWY, PEM, VOG), LI(BIS), WS, C
Linnet	Linaria cannabina	1781	no	2018	ST0483584579	51.552045	-3.37395	ST, Bem, WBR(RSPB), UKBR(RSPB), LBAP(ANG, BBNP, CER, CLY, CON, DEN, GWY, PEM, VOG), LI(BIS), WS, C
Linnet	Linaria cannabina	1781	no	2017	ST0485684643	51.552624	-3.37366	ST, Bem, WBR(RSPB), UKBR(RSPB), LBAP(ANG, BBNP, CER, CLY, CON, DEN, GWY, PEM, VOG), LI(BIS), WS, C
Linnet	Linaria cannabina	1789	no	2018	ST0486684648	51.55267	-3.37352	ST, Bem, WBR(RSPB), UKBR(RSPB), LBAP(ANG, BBNP, CER, CLY, CON, DEN, GWY, PEM, VOG), LI(BIS), WS, C
Linnet	Linaria cannabina	1805	no	21/05/2018	ST048845	51.551787	-3.37373	ST, Bem, WBR(RSPB), UKBR(RSPB), LBAP(ANG, BBNP, CER, CLY, CON, DEN, GWY, PEM, VOG), LI(BIS), WS, C
Linnet	Linaria cannabina	1851	no	2010 - 2023	ST08M	51.555857	-3.37168	ST, Bem, WBR(RSPB), UKBR(RSPB), LBAP(ANG, BBNP, CER, CLY, CON, DEN, GWY, PEM, VOG), LI(BIS), WS, C
Linnet	Linaria cannabina	1930	no	03/07/2015	ST048842	51.54909	-3.37364	ST, Bem, WBR(RSPB), UKBR(RSPB), LBAP(ANG, BBNP, CER, CLY, CON, DEN, GWY, PEM, VOG), LI(BIS), WS, C
Linnet	Linaria cannabina	1970	no	2017	ST0505284639	51.552621	-3.37084	ST, Bem, WBR(RSPB), UKBR(RSPB), LBAP(ANG, BBNP, CER, CLY, CON, DEN, GWY, PEM, VOG), LI(BIS), WS, C
Grasshopper Warbler	Locustella naevia	1365	no	18/07/2016	ST0386	51.569085	-3.39373	ST, WBR(RSPB), UKBR(RSPB), LBAP(BBNP, CON, DEN, GWY, POW, VOG), LI(BIS), WS, P
Grasshopper Warbler	Locustella naevia	1504	no	1976 - 2017	ST0484	51.551278	-3.37876	ST, WBR(RSPB), UKBR(RSPB), LBAP(BBNP, CON, DEN, GWY, POW, VOG), LI(BIS), WS, P
Grasshopper Warbler	Locustella naevia	1758	no	29/04/2022	ST046842	51.549056	-3.37653	ST, WBR(RSPB), UKBR(RSPB), LBAP(BBNP, CON, DEN, GWY, POW, VOG), LI(BIS), WS, P
Grasshopper Warbler	Locustella naevia	1795	no	06/05/2021	ST047843	51.549972	-3.37511	ST, WBR(RSPB), UKBR(RSPB), LBAP(BBNP, CON, DEN, GWY, POW, VOG), LI(BIS), WS, P
Grasshopper Warbler	Locustella naevia	1843	no	11/05/2017	ST048844	51.550888	-3.3737	ST, WBR(RSPB), UKBR(RSPB), LBAP(BBNP, CON, DEN, GWY, POW, VOG), LI(BIS), WS, P
Crossbill	Loxia curvirostra	238	no	2014 - 2015	ST08M	51.555516	-3.40052	WCA1, Bem, LBAP(CON, POW, LI(BIS), LI(VCA3), WS, C
Crossbill	Loxia curvirostra	934	no	21/11/2017	ST030842	51.548783	-3.3996	WCA1, Bem, LBAP(CON, POW, LI(BIS), LI(VCA3), WS, C
Crossbill	Loxia curvirostra	945	no	1980 - 2021	ST0284	51.550935	-3.40759	WCA1, Bem, LBAP(CON, POW, LI(BIS), LI(VCA3), WS, C
Crossbill	Loxia curvirostra	1791	no	2013 - 2021	ST0184	51.550762	-3.42201	WCA1, Bem, LBAP(CON, POW, LI(BIS), LI(VCA3), WS, C
Red Kite	Milvus milvus	1504	yes	2018 - 2024	ST08			BOY1, WCA1, WCA3, CITES, WBAm(RSPB), LBAP(CON, CRM, GWY, POW, LI(BIS), WS, P
Red Kite	Milvus milvus	1897	yes	2019/2021	ST08			BOY1, WCA1, WCA3, CITES, WBAm(RSPB), LBAP(CON, CRM, GWY, POW, LI(BIS), WS, P
Grey Wagtail	Motacilla cinerea	732	no	2006 - 2023	ST0285	51.559924	-3.40787	Bem, WBAm(RSPB), UKBR(RSPB), LBAP(CLY, CON, POW, TRAI, LI(BIS)
Grey Wagtail	Motacilla cinerea	760	no	2017 - 2022	ST0384	51.551108	-3.39318	Bem, WBAm(RSPB), UKBR(RSPB), LBAP(CLY, CON, POW, TRAI, LI(BIS)
Grey Wagtail	Motacilla cinerea	808	no	2023	ST023851	51.556752	-3.40994	Bem, WBAm(RSPB), UKBR(RSPB), LBAP(CLY, CON, POW, TRAI, LI(BIS)
Grey Wagtail	Motacilla cinerea	945	no	2015 - 2021	ST0284	51.550935	-3.40759	Bem, WBAm(RSPB), UKBR(RSPB), LBAP(CLY, CON, POW, TRAI, LI(BIS)
Grey Wagtail	Motacilla cinerea	1006	no	17/01/2017	ST035842	51.548869	-3.39239	Bem, WBAm(RSPB), UKBR(RSPB), LBAP(CLY, CON, POW, TRAI, LI(BIS)
Grey Wagtail	Motacilla cinerea	1419	no	18/07/2020	ST03518380	51.544663	-3.39277	Bem, WBAm(RSPB), UKBR(RSPB), LBAP(CLY, CON, POW, TRAI, LI(BIS)
Grey Wagtail	Motacilla cinerea	1713	no	2002 - 2021	ST0383	51.542119	-3.3929	Bem, WBAm(RSPB), UKBR(RSPB), LBAP(CLY, CON, POW, TRAI, LI(BIS)
Yellow Wagtail	Motacilla flava	732	no	28/06/2021	ST0285	51.559924	-3.40787	ST, Bem, WBR(RSPB), UKBR(RSPB), LBAP(CON, DEN, POW, TRAI, VOG), LI(BIS), LI(VCA3), WS, C
Spotted Flycatcher	Muscicapa striata	732	no	05/06/2020	ST0285	51.559924	-3.40787	ST, Bem, WBR(RSPB), UKBR(RSPB), LBAP(BBNP, CER, CLY, CON, DEN, GWY, PEM, POW, VOG), LI(BIS), WS, C
Spotted Flycatcher	Muscicapa striata	1504	no	18/05/2020	ST0384	51.551278	-3.37876	ST, Bem, WBR(RSPB), UKBR(RSPB), LBAP(BBNP, CER, CLY, CON, DEN, GWY, PEM, POW, VOG), LI(BIS), WS, C

Common name	Scientific name	Distance (m)	Sensitive	Date	Grid Reference (Public)	Latitude	Longitude	Status
Spotted Flycatcher	Muscopora striata	1791	no	2018	ST0184	51.550762	-3.42201	S7, Bem, WBR(RSPB), UKBR(RSPB), LBAP(BBNP, CON, DEN, GWY, PEM, POW, VOG), LI(BIS), WS, C
Whistler	Oenanthe oenanthe	1504	no	29/04/2017	ST0484	51.551278	-3.37876	Bem, WBAm(RSPB), LBAP(BBNP, CON, POW), LI(BIS)
House Sparrow	Passer domesticus	760	no	09/05/2021	ST0384	51.551108	-3.39318	S7, WBAm(RSPB), UKBR(RSPB), LBAP(CLY, CON, GWY, VOG), LI(BIS), WS, C
House Sparrow	Passer domesticus	945	no	16/05/2021	ST0284	51.550935	-3.40759	S7, WBAm(RSPB), UKBR(RSPB), LBAP(CLY, CON, GWY, VOG), LI(BIS), WS, C
House Sparrow	Passer domesticus	1214	no	12/08/2021	ST03688408	51.547408	-3.39039	S7, WBAm(RSPB), UKBR(RSPB), LBAP(CLY, CON, GWY, VOG), LI(BIS), WS, C
House Sparrow	Passer domesticus	1476	no	17/12/2020	ST0286	51.568913	-3.40815	S7, WBAm(RSPB), UKBR(RSPB), LBAP(CLY, CON, GWY, VOG), LI(BIS), WS, C
House Sparrow	Passer domesticus	1504	no	1987 - 2020	ST0484	51.551278	-3.37876	S7, WBAm(RSPB), UKBR(RSPB), LBAP(CLY, CON, GWY, VOG), LI(BIS), WS, C
House Sparrow	Passer domesticus	1533	no	01/08/2017	ST0379063782	51.544703	-3.3888	S7, WBAm(RSPB), UKBR(RSPB), LBAP(CLY, CON, GWY, VOG), LI(BIS), WS, C
House Sparrow	Passer domesticus	1688	no	07/05/2021	ST0185	51.55975	-3.42229	S7, WBAm(RSPB), UKBR(RSPB), LBAP(CLY, CON, GWY, VOG), LI(BIS), WS, C
House Sparrow	Passer domesticus	1851	no	2023	ST08M	51.555857	-3.37168	S7, WBAm(RSPB), UKBR(RSPB), LBAP(CLY, CON, GWY, VOG), LI(BIS), WS, C
House Sparrow	Passer domesticus	1884	no	2002 - 2021	ST0486	51.569255	-3.3793	S7, WBAm(RSPB), UKBR(RSPB), LBAP(CLY, CON, GWY, VOG), LI(BIS), WS, C
House Sparrow	Passer domesticus	1952	no	2023	ST047840	51.547275	-3.37503	S7, WBAm(RSPB), UKBR(RSPB), LBAP(CLY, CON, GWY, VOG), LI(BIS), WS, C
Redstart	Phoenicurus phoenicurus	1688	no	2021 - 2023	ST0185	51.55975	-3.42229	Bem, WBAm(RSPB), LBAP(CON, GWY, POW, SNP), LI(BIS), WS, C
Redstart	Phoenicurus phoenicurus	1884	no	26/07/2021	ST0486	51.569255	-3.3793	Bem, WBAm(RSPB), LBAP(CON, GWY, POW, SNP), LI(BIS), WS, C
Wood Warbler	Phylloscopus sibilatrix	732	no	2001 - 2023	ST0285	51.559924	-3.40787	S7, WBR(RSPB), UKBR(RSPB), LBAP(CON, GWY, SNP, VOG), LI(BIS), WS, C
Wood Warbler	Phylloscopus sibilatrix	945	no	2010 - 2021	ST0284	51.550935	-3.40759	S7, WBR(RSPB), UKBR(RSPB), LBAP(CON, GWY, SNP, VOG), LI(BIS), WS, C
Wood Warbler	Phylloscopus sibilatrix	1791	no	2019 - 2021	ST0184	51.550762	-3.42201	S7, WBR(RSPB), UKBR(RSPB), LBAP(CON, GWY, SNP, VOG), LI(BIS), WS, C
Willow Warbler	Phylloscopus trochilus	700	no	14/05/2022	ST037855	51.560589	-3.39986	WBR(RSPB), LBAP(CON, LI(BIS)
Willow Warbler	Phylloscopus trochilus	732	no	2006 - 2021	ST0285	51.559924	-3.40787	WBR(RSPB), LBAP(CON, LI(BIS)
Willow Warbler	Phylloscopus trochilus	945	no	2014 - 2021	ST0284	51.550935	-3.40759	WBR(RSPB), LBAP(CON, LI(BIS)
Willow Warbler	Phylloscopus trochilus	1214	no	28/04/2023	ST042846	51.552584	-3.3824	WBR(RSPB), LBAP(CON, LI(BIS)
Willow Warbler	Phylloscopus trochilus	1365	no	18/07/2016	ST0386	51.569085	-3.39373	WBR(RSPB), LBAP(CON, LI(BIS)
Willow Warbler	Phylloscopus trochilus	1504	no	2005 - 2024	ST0484	51.551278	-3.37876	WBR(RSPB), LBAP(CON, LI(BIS)
Willow Warbler	Phylloscopus trochilus	1649	no	2018	ST0434284031	51.547035	-3.38091	WBR(RSPB), LBAP(CON, LI(BIS)
Willow Warbler	Phylloscopus trochilus	1688	no	2000 - 2021	ST0185	51.55975	-3.42229	WBR(RSPB), LBAP(CON, LI(BIS)
Willow Warbler	Phylloscopus trochilus	1702	no	2019	ST0446484088	51.547568	-3.37916	WBR(RSPB), LBAP(CON, LI(BIS)
Willow Warbler	Phylloscopus trochilus	1758	no	02/06/2024	ST046842	51.549056	-3.37653	WBR(RSPB), LBAP(CON, LI(BIS)
Willow Warbler	Phylloscopus trochilus	1758	no	2017	ST0474084413	51.550537	-3.37527	WBR(RSPB), LBAP(CON, LI(BIS)
Willow Warbler	Phylloscopus trochilus	1791	no	07/05/2021	ST0184	51.550762	-3.42201	WBR(RSPB), LBAP(CON, LI(BIS)
Willow Warbler	Phylloscopus trochilus	1824	no	2018	ST0452483970	51.546518	-3.37827	WBR(RSPB), LBAP(CON, LI(BIS)
Willow Warbler	Phylloscopus trochilus	1843	no	30/05/2024	ST047842	51.549073	-3.37509	WBR(RSPB), LBAP(CON, LI(BIS)
Willow Warbler	Phylloscopus trochilus	1851	no	2009 - 2023	ST08M	51.555857	-3.37168	WBR(RSPB), LBAP(CON, LI(BIS)
Willow Warbler	Phylloscopus trochilus	1952	no	2023	ST047840	51.547275	-3.37503	WBR(RSPB), LBAP(CON, LI(BIS)
Green Woodpecker	Picus viridis	528	no	19/10/2019	ST031846	51.552396	-3.39826	Bem, WBAm(RSPB), LBAP(CLY, CON, DEN, GWY, PEM, POW, SNP), LI(BIS), WS, C
Green Woodpecker	Picus viridis	945	no	1999 - 2020	ST0284	51.550935	-3.40759	Bem, WBAm(RSPB), LBAP(CLY, CON, DEN, GWY, PEM, POW, SNP), LI(BIS), WS, C
Green Woodpecker	Picus viridis	1476	no	01/01/2021	ST0286	51.568913	-3.40815	Bem, WBAm(RSPB), LBAP(CLY, CON, DEN, GWY, PEM, POW, SNP), LI(BIS), WS, C
Green Woodpecker	Picus viridis	1504	no	2014 - 2016	ST0484	51.551278	-3.37876	Bem, WBAm(RSPB), LBAP(CLY, CON, DEN, GWY, PEM, POW, SNP), LI(BIS), WS, C
Green Woodpecker	Picus viridis	1713	no	2002 - 2013	ST0383	51.542119	-3.3929	Bem, WBAm(RSPB), LBAP(CLY, CON, DEN, GWY, PEM, POW, SNP), LI(BIS), WS, C
Green Woodpecker	Picus viridis	1828	no	31/08/2020	ST04988513	51.557068	-3.37194	Bem, WBAm(RSPB), LBAP(CLY, CON, DEN, GWY, PEM, POW, SNP), LI(BIS), WS, C
Green Woodpecker	Picus viridis	1829	no	06/03/2021	ST015860	51.564703	-3.42173	Bem, WBAm(RSPB), LBAP(CLY, CON, DEN, GWY, PEM, POW, SNP), LI(BIS), WS, C
Green Woodpecker	Picus viridis	1851	no	2009 - 2014	ST08M	51.555857	-3.37168	Bem, WBAm(RSPB), LBAP(CLY, CON, DEN, GWY, PEM, POW, SNP), LI(BIS), WS, C
Green Woodpecker	Picus viridis	1884	no	2002 - 2021	ST0486	51.569255	-3.3793	Bem, WBAm(RSPB), LBAP(CLY, CON, DEN, GWY, PEM, POW, SNP), LI(BIS), WS, C
Green Woodpecker	Picus viridis	1930	no	03/07/2015	ST048842	51.54909	-3.37364	Bem, WBAm(RSPB), LBAP(CLY, CON, DEN, GWY, PEM, POW, SNP), LI(BIS), WS, C
Marsh Tit	Parus palustris	732	no	2022 - 2023	ST0285	51.559924	-3.40787	S7, Bem, WBR(RSPB), UKBR(RSPB), LBAP(BBNP, CON, DEN, GWY, POW, VOG), LI(BIS), WS, P, WS, C
Marsh Tit	Parus palustris	808	no	17/11/2023	ST023851	51.556752	-3.40994	S7, Bem, WBR(RSPB), UKBR(RSPB), LBAP(BBNP, CON, DEN, GWY, POW, VOG), LI(BIS), WS, P, WS, C
Duncock	Prunella modularis	238	no	2014 - 2015	ST08H	51.555516	-3.40052	S7, Bem, LBAP(CON, POW, VOG), LI(BIS)
Duncock	Prunella modularis	760	no	2017 - 2022	ST0384	51.551108	-3.39318	S7, Bem, LBAP(CON, POW, VOG), LI(BIS)
Duncock	Prunella modularis	827	no	01/10/2020	ST024847	51.553174	-3.40838	S7, Bem, LBAP(CON, POW, VOG), LI(BIS)
Duncock	Prunella modularis	914	no	15/03/2020	ST023847	51.553157	-3.40983	S7, Bem, LBAP(CON, POW, VOG), LI(BIS)
Duncock	Prunella modularis	945	no	2014 - 2021	ST0284	51.550935	-3.40759	S7, Bem, LBAP(CON, POW, VOG), LI(BIS)
Duncock	Prunella modularis	1365	no	18/07/2016	ST0386	51.569085	-3.39373	S7, Bem, LBAP(CON, POW, VOG), LI(BIS)
Duncock	Prunella modularis	1476	no	17/12/2020	ST0286	51.568913	-3.40815	S7, Bem, LBAP(CON, POW, VOG), LI(BIS)
Duncock	Prunella modularis	1504	no	2014 - 2023	ST0484	51.551278	-3.37876	S7, Bem, LBAP(CON, POW, VOG), LI(BIS)
Duncock	Prunella modularis	1642	no	21/05/2018	ST043840	51.547208	-3.3808	S7, Bem, LBAP(CON, POW, VOG), LI(BIS)
Duncock	Prunella modularis	1665	no	2018	ST0435084016	51.546902	-3.38079	S7, Bem, LBAP(CON, POW, VOG), LI(BIS)
Duncock	Prunella modularis	1688	no	2000 - 2021	ST0185	51.55975	-3.42229	S7, Bem, LBAP(CON, POW, VOG), LI(BIS)
Duncock	Prunella modularis	1829	no	06/03/2021	ST015860	51.564703	-3.42173	S7, Bem, LBAP(CON, POW, VOG), LI(BIS)
Duncock	Prunella modularis	1851	no	2009 - 2023	ST08M	51.555857	-3.37168	S7, Bem, LBAP(CON, POW, VOG), LI(BIS)
Duncock	Prunella modularis	1857	no	10/03/2018	ST040835	51.542662	-3.38499	S7, Bem, LBAP(CON, POW, VOG), LI(BIS)
Duncock	Prunella modularis	1949	no	14/03/2023	ST0475684064	51.547402	-3.37495	S7, Bem, LBAP(CON, POW, VOG), LI(BIS)



Common name	Scientific name	Distance (m)	Sensitive	Date	Grid Reference (Public)	Latitude	Longitude	Status
Dunrook	<i>Punella modularis</i>	1952	no	2023	ST047840	51.547275	-3.37503	S7, Bem, LBAP(CON, POW, VOG), LI(BIS)
Dunrook	<i>Punella modularis</i>	1093	no	06/10/2020	ST051851	51.55723	-3.36956	S7, Bem, LBAP(CON, POW, VOG), LI(BIS)
Ring-necked Plover	<i>Poecetes graminea</i>	1504	no	25/10/2015	ST0484	51.551278	-3.37876	WCAG, CITES, IANIS
Bullfinch	<i>Pyrrhula pyrrhula</i>	470	no	15/04/2021	ST0385	51.560006	-3.39345	S7, WBR(RSPB), LBAP(BBNP, CER, CLY, CON, DEN, GWY, PEM, TRF, VOG), LI(BIS), WS, C
Bullfinch	<i>Pyrrhula pyrrhula</i>	827	no	01/10/2020	ST024847	51.553174	-3.40838	S7, WBR(RSPB), LBAP(BBNP, CER, CLY, CON, DEN, GWY, PEM, TRF, VOG), LI(BIS), WS, C
Bullfinch	<i>Pyrrhula pyrrhula</i>	1365	no	18/07/2016	ST0386	51.569085	-3.39373	S7, WBR(RSPB), LBAP(BBNP, CER, CLY, CON, DEN, GWY, PEM, TRF, VOG), LI(BIS), WS, C
Bullfinch	<i>Pyrrhula pyrrhula</i>	1504	no	2014 - 2023	ST0484	51.551278	-3.37876	S7, WBR(RSPB), LBAP(BBNP, CER, CLY, CON, DEN, GWY, PEM, TRF, VOG), LI(BIS), WS, C
Bullfinch	<i>Pyrrhula pyrrhula</i>	1511	no	25/12/2020	ST043842	51.549005	-3.38085	S7, WBR(RSPB), LBAP(BBNP, CER, CLY, CON, DEN, GWY, PEM, TRF, VOG), LI(BIS), WS, C
Bullfinch	<i>Pyrrhula pyrrhula</i>	1546	no	13/07/2020	ST037837	51.544409	-3.38937	S7, WBR(RSPB), LBAP(BBNP, CER, CLY, CON, DEN, GWY, PEM, TRF, VOG), LI(BIS), WS, C
Bullfinch	<i>Pyrrhula pyrrhula</i>	1583	no	14/05/2023	ST046844	51.552652	-3.37664	S7, WBR(RSPB), LBAP(BBNP, CER, CLY, CON, DEN, GWY, PEM, TRF, VOG), LI(BIS), WS, C
Bullfinch	<i>Pyrrhula pyrrhula</i>	1619	no	20/03/2022	ST046545	51.551733	-3.37661	S7, WBR(RSPB), LBAP(BBNP, CER, CLY, CON, DEN, GWY, PEM, TRF, VOG), LI(BIS), WS, C
Bullfinch	<i>Pyrrhula pyrrhula</i>	1633	no	02/04/2017	ST039837	51.544443	-3.38648	S7, WBR(RSPB), LBAP(BBNP, CER, CLY, CON, DEN, GWY, PEM, TRF, VOG), LI(BIS), WS, C
Bullfinch	<i>Pyrrhula pyrrhula</i>	1713	no	2002 - 2021	ST0383	51.542119	-3.3929	S7, WBR(RSPB), LBAP(BBNP, CER, CLY, CON, DEN, GWY, PEM, TRF, VOG), LI(BIS), WS, C
Bullfinch	<i>Pyrrhula pyrrhula</i>	1758	no	02/06/2024	ST046842	51.549056	-3.37653	S7, WBR(RSPB), LBAP(BBNP, CER, CLY, CON, DEN, GWY, PEM, TRF, VOG), LI(BIS), WS, C
Bullfinch	<i>Pyrrhula pyrrhula</i>	1843	no	30/05/2024	ST047842	51.549073	-3.37509	S7, WBR(RSPB), LBAP(BBNP, CER, CLY, CON, DEN, GWY, PEM, TRF, VOG), LI(BIS), WS, C
Bullfinch	<i>Pyrrhula pyrrhula</i>	1851	no	2011 - 2023	ST08M	51.555857	-3.37168	S7, WBR(RSPB), LBAP(BBNP, CER, CLY, CON, DEN, GWY, PEM, TRF, VOG), LI(BIS), WS, C
Bullfinch	<i>Pyrrhula pyrrhula</i>	1874	no	06/03/2021	ST014859	51.563786	-3.42314	S7, WBR(RSPB), LBAP(BBNP, CER, CLY, CON, DEN, GWY, PEM, TRF, VOG), LI(BIS), WS, C
Bullfinch	<i>Pyrrhula pyrrhula</i>	1952	no	07/01/2023	ST047840	51.547275	-3.37503	S7, WBR(RSPB), LBAP(BBNP, CER, CLY, CON, DEN, GWY, PEM, TRF, VOG), LI(BIS), WS, C
Goldcrest	<i>Regulus regulus</i>	732	no	2006 - 2023	ST0285	51.559924	-3.40787	Bem, WBAm(RSPB), LBAP(CON, POW), LI(BIS)
Goldcrest	<i>Regulus regulus</i>	760	no	2017 - 2021	ST0384	51.551108	-3.39318	Bem, WBAm(RSPB), LBAP(CON, POW), LI(BIS)
Goldcrest	<i>Regulus regulus</i>	808	no	2023	ST023851	51.556752	-3.40994	Bem, WBAm(RSPB), LBAP(CON, POW), LI(BIS)
Goldcrest	<i>Regulus regulus</i>	827	no	1975 - 2020	ST024847	51.553174	-3.40838	Bem, WBAm(RSPB), LBAP(CON, POW), LI(BIS)
Goldcrest	<i>Regulus regulus</i>	945	no	2013 - 2020	ST0284	51.550935	-3.40759	Bem, WBAm(RSPB), LBAP(CON, POW), LI(BIS)
Goldcrest	<i>Regulus regulus</i>	1592	no	22/03/2020	ST045859	51.56432	-3.37843	Bem, WBAm(RSPB), LBAP(CON, POW), LI(BIS)
Goldcrest	<i>Regulus regulus</i>	1679	no	02/01/2021	ST01788614	51.565598	-3.41836	Bem, WBAm(RSPB), LBAP(CON, POW), LI(BIS)
Goldcrest	<i>Regulus regulus</i>	1818	no	14/03/2023	ST0477584349	51.549967	-3.37475	Bem, WBAm(RSPB), LBAP(CON, POW), LI(BIS)
Goldcrest	<i>Regulus regulus</i>	1952	no	2023	ST047840	51.547275	-3.37503	Bem, WBAm(RSPB), LBAP(CON, POW), LI(BIS)
Sand Martin	<i>Riparia riparia</i>	700	no	14/05/2022	ST037855	51.560589	-3.38986	Bem, WBAm(RSPB), LBAP(CON, DEN, GWY, POW, VOG), LI(BIS), WS, C
Sand Martin	<i>Riparia riparia</i>	1851	no	20/04/2023	ST08M	51.555857	-3.37168	Bem, WBAm(RSPB), LBAP(CON, DEN, GWY, POW, VOG), LI(BIS), WS, C
Starling	<i>Stumus vulgaris</i>	732	no	2006 - 2023	ST0285	51.559924	-3.40787	BDX22, S7, Bem, WBR(RSPB), UKBR(RSPB), LBAP(BBNP, CON, GWY, VOG), LI(BIS), WS, C
Starling	<i>Stumus vulgaris</i>	760	no	05/07/2022	ST0384	51.551108	-3.39318	BDX22, S7, Bem, WBR(RSPB), UKBR(RSPB), LBAP(BBNP, CON, GWY, VOG), LI(BIS), WS, C
Starling	<i>Stumus vulgaris</i>	808	no	24/12/2023	ST023851	51.556752	-3.40994	BDX22, S7, Bem, WBR(RSPB), UKBR(RSPB), LBAP(BBNP, CON, GWY, VOG), LI(BIS), WS, C
Starling	<i>Stumus vulgaris</i>	827	no	01/10/2020	ST024847	51.553174	-3.40838	BDX22, S7, Bem, WBR(RSPB), UKBR(RSPB), LBAP(BBNP, CON, GWY, VOG), LI(BIS), WS, C
Starling	<i>Stumus vulgaris</i>	945	no	16/05/2021	ST0284	51.550935	-3.40759	BDX22, S7, Bem, WBR(RSPB), UKBR(RSPB), LBAP(BBNP, CON, GWY, VOG), LI(BIS), WS, C
Starling	<i>Stumus vulgaris</i>	1504	no	1967 - 2023	ST0484	51.551278	-3.37876	BDX22, S7, Bem, WBR(RSPB), UKBR(RSPB), LBAP(BBNP, CON, GWY, VOG), LI(BIS), WS, C
Starling	<i>Stumus vulgaris</i>	1851	no	2014 - 2023	ST08M	51.555857	-3.37168	BDX22, S7, Bem, WBR(RSPB), UKBR(RSPB), LBAP(BBNP, CON, GWY, VOG), LI(BIS), WS, C
Starling	<i>Stumus vulgaris</i>	1952	no	2023	ST047840	51.547275	-3.37503	BDX22, S7, Bem, WBR(RSPB), UKBR(RSPB), LBAP(BBNP, CON, GWY, VOG), LI(BIS), WS, C
Redwing	<i>Turdus iliacus</i>	827	no	01/10/2020	ST024847	51.553174	-3.40838	BDX22, WCA1, WBAm(RSPB), UKBR(RSPB), LBAP(CON, POW), LI(BIS)
Redwing	<i>Turdus iliacus</i>	945	no	01/12/2020	ST0284	51.550935	-3.40759	BDX22, WCA1, WBAm(RSPB), UKBR(RSPB), LBAP(CON, POW), LI(BIS)
Redwing	<i>Turdus iliacus</i>	1263	no	03/04/2020	ST019855	51.560278	-3.41582	BDX22, WCA1, WBAm(RSPB), UKBR(RSPB), LBAP(CON, POW), LI(BIS)
Redwing	<i>Turdus iliacus</i>	1476	no	17/12/2020	ST0286	51.568913	-3.40815	BDX22, WCA1, WBAm(RSPB), UKBR(RSPB), LBAP(CON, POW), LI(BIS)
Redwing	<i>Turdus iliacus</i>	1504	no	1973 - 2023	ST0484	51.551278	-3.37876	BDX22, WCA1, WBAm(RSPB), UKBR(RSPB), LBAP(CON, POW), LI(BIS)
Redwing	<i>Turdus iliacus</i>	1511	no	25/12/2020	ST043842	51.549005	-3.38085	BDX22, WCA1, WBAm(RSPB), UKBR(RSPB), LBAP(CON, POW), LI(BIS)
Redwing	<i>Turdus iliacus</i>	1713	no	2002 - 2020	ST0383	51.542119	-3.3929	BDX22, WCA1, WBAm(RSPB), UKBR(RSPB), LBAP(CON, POW), LI(BIS)
Redwing	<i>Turdus iliacus</i>	1952	no	01/01/2023	ST047840	51.547275	-3.37503	BDX22, WCA1, WBAm(RSPB), UKBR(RSPB), LBAP(CON, POW), LI(BIS)
Song Thrush	<i>Turdus philomelos</i>	238	no	2015	ST08M	51.555516	-3.40052	BDX22, S7, Bem, WBAm(RSPB), UKBR(RSPB), LBAP(ANG, BBNP, CER, CLY, CON, DEN, GWY, PEM, POW, SNP, TRF, VOG, WRE), LI(BIS), WS, C
Song Thrush	<i>Turdus philomelos</i>	700	no	14/05/2022	ST037855	51.560589	-3.38986	BDX22, S7, Bem, WBAm(RSPB), UKBR(RSPB), LBAP(ANG, BBNP, CER, CLY, CON, DEN, GWY, PEM, POW, SNP, TRF, VOG, WRE), LI(BIS), WS, C
Song Thrush	<i>Turdus philomelos</i>	732	no	2006 - 2021	ST0285	51.559924	-3.40787	BDX22, S7, Bem, WBAm(RSPB), UKBR(RSPB), LBAP(ANG, BBNP, CER, CLY, CON, DEN, GWY, PEM, POW, SNP, TRF, VOG, WRE), LI(BIS), WS, C
Song Thrush	<i>Turdus philomelos</i>	760	no	09/05/2021	ST0384	51.551108	-3.39318	BDX22, S7, Bem, WBAm(RSPB), UKBR(RSPB), LBAP(ANG, BBNP, CER, CLY, CON, DEN, GWY, PEM, POW, SNP, TRF, VOG, WRE), LI(BIS), WS, C
Song Thrush	<i>Turdus philomelos</i>	945	no	2010 - 2023	ST0284	51.550935	-3.40759	BDX22, S7, Bem, WBAm(RSPB), UKBR(RSPB), LBAP(ANG, BBNP, CER, CLY, CON, DEN, GWY, PEM, POW, SNP, TRF, VOG, WRE), LI(BIS), WS, C
Song Thrush	<i>Turdus philomelos</i>	1112	no	29/10/2019	ST04268527	51.558204	-3.38236	BDX22, S7, Bem, WBAm(RSPB), UKBR(RSPB), LBAP(ANG, BBNP, CER, CLY, CON, DEN, GWY, PEM, POW, SNP, TRF, VOG, WRE), LI(BIS), WS, C
Song Thrush	<i>Turdus philomelos</i>	1365	no	18/07/2016	ST0386	51.569085	-3.39373	BDX22, S7, Bem, WBAm(RSPB), UKBR(RSPB), LBAP(ANG, BBNP, CER, CLY, CON, DEN, GWY, PEM, POW, SNP, TRF, VOG, WRE), LI(BIS), WS, C
Song Thrush	<i>Turdus philomelos</i>	1476	no	17/12/2020	ST0286	51.568913	-3.40815	BDX22, S7, Bem, WBAm(RSPB), UKBR(RSPB), LBAP(ANG, BBNP, CER, CLY, CON, DEN, GWY, PEM, POW, SNP, TRF, VOG, WRE), LI(BIS), WS, C
Song Thrush	<i>Turdus philomelos</i>	1500	no	21/05/2018	ST042841	51.548089	-3.38227	BDX22, S7, Bem, WBAm(RSPB), UKBR(RSPB), LBAP(ANG, BBNP, CER, CLY, CON, DEN, GWY, PEM, POW, SNP, TRF, VOG, WRE), LI(BIS), WS, C
Song Thrush	<i>Turdus philomelos</i>	1504	no	1967 - 2024	ST0484	51.551278	-3.37876	BDX22, S7, Bem, WBAm(RSPB), UKBR(RSPB), LBAP(ANG, BBNP, CER, CLY, CON, DEN, GWY, PEM, POW, SNP, TRF, VOG, WRE), LI(BIS), WS, C
Song Thrush	<i>Turdus philomelos</i>	1538	no	12/12/2020	ST0378376	51.544546	-3.38915	BDX22, S7, Bem, WBAm(RSPB), UKBR(RSPB), LBAP(ANG, BBNP, CER, CLY, CON, DEN, GWY, PEM, POW, SNP, TRF, VOG, WRE), LI(BIS), WS, C
Song Thrush	<i>Turdus philomelos</i>	1554	no	2018	ST0429284117	51.5478	-3.38165	BDX22, S7, Bem, WBAm(RSPB), UKBR(RSPB), LBAP(ANG, BBNP, CER, CLY, CON, DEN, GWY, PEM, POW, SNP, TRF, VOG, WRE), LI(BIS), WS, C
Song Thrush	<i>Turdus philomelos</i>	1574	no	14/03/2023	ST0428884083	51.547494	-3.3817	BDX22, S7, Bem, WBAm(RSPB), UKBR(RSPB), LBAP(ANG, BBNP, CER, CLY, CON, DEN, GWY, PEM, POW, SNP, TRF, VOG, WRE), LI(BIS), WS, C
Song Thrush	<i>Turdus philomelos</i>	1592	no	22/03/2020	ST045859	51.56432	-3.37843	BDX22, S7, Bem, WBAm(RSPB), UKBR(RSPB), LBAP(ANG, BBNP, CER, CLY, CON, DEN, GWY, PEM, POW, SNP, TRF, VOG, WRE), LI(BIS), WS, C
Song Thrush	<i>Turdus philomelos</i>	1713	no	2002 - 2022	ST0383	51.542119	-3.3929	BDX22, S7, Bem, WBAm(RSPB), UKBR(RSPB), LBAP(ANG, BBNP, CER, CLY, CON, DEN, GWY, PEM, POW, SNP, TRF, VOG, WRE), LI(BIS), WS, C



Common name	Scientific name	Distance (m)	Sensitive	Date	Grid Reference (Public)	Latitude	Longitude	Status
Song Thrush	Turdus philomelos	1791	no	07/05/2021	ST0184	51.550762	-3.42201	BDx22, ST, Bem, WBAm(RSPB), UKBR(RSPB), LBAFANG, BBNP, CER, CLY, CON, DEN, GWY, PEM, POW, SNP, TRF, VOG, WRE, LJBIS, WS, C
Song Thrush	Turdus philomelos	1829	no	06/03/2021	ST01860	51.564703	-3.42173	BDx22, ST, Bem, WBAm(RSPB), UKBR(RSPB), LBAFANG, BBNP, CER, CLY, CON, DEN, GWY, PEM, POW, SNP, TRF, VOG, WRE, LJBIS, WS, C
Song Thrush	Turdus philomelos	1851	no	2014 - 2023	ST03M	51.555857	-3.37168	BDx22, ST, Bem, WBAm(RSPB), UKBR(RSPB), LBAFANG, BBNP, CER, CLY, CON, DEN, GWY, PEM, POW, SNP, TRF, VOG, WRE, LJBIS, WS, C
Song Thrush	Turdus philomelos	1890	no	10/05/2017	ST0489884084	51.547572	-3.37579	BDx22, ST, Bem, WBAm(RSPB), UKBR(RSPB), LBAFANG, BBNP, CER, CLY, CON, DEN, GWY, PEM, POW, SNP, TRF, VOG, WRE, LJBIS, WS, C
Song Thrush	Turdus philomelos	1952	no	2023	ST047840	51.547275	-3.37503	BDx22, ST, Bem, WBAm(RSPB), UKBR(RSPB), LBAFANG, BBNP, CER, CLY, CON, DEN, GWY, PEM, POW, SNP, TRF, VOG, WRE, LJBIS, WS, C
Song Thrush	Turdus philomelos	1993	no	06/10/2020	ST051651	51.55723	-3.36666	BDx22, ST, Bem, WBAm(RSPB), UKBR(RSPB), LBAFANG, BBNP, CER, CLY, CON, DEN, GWY, PEM, POW, SNP, TRF, VOG, WRE, LJBIS, WS, C
Fieldfare	Turdus pilaris	1504	no	1873 - 2023	ST0484	51.551278	-3.37876	BDx22, WCA1, WBAm(RSPB), UKBR(RSPB), LBAFANG, BBNP, CER, CLY, CON, DEN, GWY, PEM, POW, SNP, TRF, VOG, WRE, LJBIS, WS, C
Mistle Thrush	Turdus viscivorus	732	no	2008 - 2023	ST0285	51.559924	-3.40787	BDx22, Bem, WBAm(RSPB), UKBR(RSPB)
Mistle Thrush	Turdus viscivorus	760	no	2016 - 2022	ST0384	51.551108	-3.39318	BDx22, Bem, WBAm(RSPB), UKBR(RSPB)
Mistle Thrush	Turdus viscivorus	808	no	26/04/2023	ST023851	51.556752	-3.40994	BDx22, Bem, WBAm(RSPB), UKBR(RSPB)
Mistle Thrush	Turdus viscivorus	825	no	24/01/2022	ST034859	51.564133	-3.3943	BDx22, Bem, WBAm(RSPB), UKBR(RSPB)
Mistle Thrush	Turdus viscivorus	945	no	2014 - 2023	ST0284	51.550935	-3.40759	BDx22, Bem, WBAm(RSPB), UKBR(RSPB)
Mistle Thrush	Turdus viscivorus	1214	no	28/04/2023	ST042846	51.552584	-3.3824	BDx22, Bem, WBAm(RSPB), UKBR(RSPB)
Mistle Thrush	Turdus viscivorus	1504	no	2014 - 2023	ST0484	51.551278	-3.37876	BDx22, Bem, WBAm(RSPB), UKBR(RSPB)
Mistle Thrush	Turdus viscivorus	1511	no	25/12/2020	ST043842	51.549006	-3.38085	BDx22, Bem, WBAm(RSPB), UKBR(RSPB)
Mistle Thrush	Turdus viscivorus	1744	no	05/06/2024	ST02368362	51.543047	-3.4093	BDx22, Bem, WBAm(RSPB), UKBR(RSPB)
Mistle Thrush	Turdus viscivorus	1952	no	2023	ST047840	51.547275	-3.37503	BDx22, Bem, WBAm(RSPB), UKBR(RSPB)

Appendix X (c). LERC Wales data: notable amphibian records with 2km of The Site boundary

Common name	Scientific name	Distance (m)	Sensitive	Date	Grid Reference (Public)	Latitude	Longitude	Status

Common name	Scientific name	Distance (m)	Sensitive	Date	Grid Reference (Public)	Latitude	Longitude	Status

DRAFT

**Appendix X (d). LERC Wales data: notable invertebrates with 2km of The Site boundary**

Common name	Scientific name	Distance (m)	Sensitive	Date	Grid Reference (Public)	Latitude	Longitude	Status



Common name	Scientific name	Distance (m)	Sensitive	Date	Grid Reference (Public)	Latitude	Longitude	Status

Common name	Scientific name	Distance (m)	Sensitive	Date	Grid Reference (Public)	Latitude	Longitude	Status

**Appendix X (e). LERC Wales data: notable fish with 2km of The Site boundary**

Common name	Scientific name	Distance (m)	Sensitive	Date	Grid Reference (Public)	Latitude	Longitude	Status

Appendix X (f). LERC Wales data: notable fungi with 2km of The Site boundary

Common name	Scientific name	Distance (m)	Sensitive	Date	Grid Reference (Public)	Latitude	Longitude	Status

**Appendix X (g). LERC Wales data: notable bryophytes with 2km of The Site boundary**

Common name	Scientific name	Distance (m)	Sensitive	Date	Grid Reference (Public)	Latitude	Longitude	Status

DRAFT

**Appendix X (h). LERC Wales data: notable plants with 2km of The Site boundary**



Common name	Scientific name	Distance (m)	Sensitive	Date	Grid Reference (Public)	Latitude	Longitude	Status

Common name	Scientific name	Distance (m)	Sensitive	Date	Grid Reference (Public)	Latitude	Longitude	Status



Common name	Scientific name	Distance (m)	Sensitive	Date	Grid Reference (Public)	Latitude	Longitude	Status



## Appendix XI (a). Fungi photos

**Photo 1.** Smokey Spindles



**Photo 1.** Petticoat Mottlegill



**Photo 2.** Scarlet Waxcap



**Photo 3.** Parasol



**Photo 5.** Butter Waxcap



**Photo 4. Butter Waxcap**



**Photo 6. Heath Waxcap**



**Photo 7. Clouded Agaric**



**Photo 8. Meadow Waxcap**



**Photo 9. Bolete sp.**



**Appendix XI (b). Field photos**

**Photo 1. Field 1 – Facing north.**





**Photo 2.** Field 1 – Facing south.



**Photo 3.** Field 2 – Facing north.



**Photo 4.** Field 2 – Facing east.



**Photo 5.** Field 3 – Facing north.





**Photo 6.** Field 3 – Facing east.



**Photo 7.** Field 4 – Facing north.



**Photo 8.** Field 4 – Facing east.



**Photo 9.** Field 5 – Facing north.





**Photo 10.** Field 5 – Facing south-west.



**Photo 11.** Field 6 – Facing west.



**Photo 12.** Field 6 – Facing north.





**Photo 13.** Field 7 – Facing southeast.



**Photo 14.** Field 7 – Facing north.



**Photo 15.** Field 8 – Facing north.



**Photo 16.** Field 8 – Facing west.



**Photo 17.** Field 9 – Facing southeast.





**Photo 18.** Field 9 – Facing south.



**Photo 19.** Field 10 – Facing west.



**Photo 20.** Field 10 – Facing north.





**Photo 21.** Field 11 – Facing north.



**Appendix X (c). Rush parcel photos**



**Photo 1. R1 (Field 9)**



**Photo 2. R2 (Field 8)**



**Photo 3. R3 (Field 8)**



**Photo 4. R4 (Field 9)**



**Photo 5. R5 (Field 9)**



**Photo 6. R6 (Field 7)**





**Photo 7. R7 (Field 3)**



**Photo 8. R8 (Field 1)**



**Photo 9. R9 (Field 1)**



**Photo 10. R10 (Field 1)**



**Photo 11. R11 (Field 1)**



**Photo 12. R12 (Field 1)**





**Photo 13. R13 (Field 2)**



**Photo 14. R14 (Field 2)**



**Photo 15. R15 (Field 2)**



**Photo 16. R16 (Field 7)**



**Photo 17. R18 (Field 1)**



**Photo 18. R18 (Field 1)**



## **Appendx XII. Protected species and habitats legislation (Europe and UK)**

This report has been developed in alignment with planning guidance and with special consideration for legally protected species and habitats.

A number of plants and animals receive legal protection under the Wildlife and Countryside Act 1981 (as amended). For these species with legal protection, any type of development that would injure, kill, ill-treat, intentionally damage or destroy any protected species or place of shelter would be considered a criminal act. The Act was further strengthened in 2000 by the introduction of the Countryside and Rights of Way (CRoW) Act 2000.

Species of European Importance receive additional protection under the Conservation of Habitats and Species Regulations 2010 (The 'Habitats Regulations') as amended by the Conservation of Habitats and Species (amendment) Regulations 2012. Other species receive protection through species-specific legislation (e.g., the Protection of Badgers Act, 1992).

Any development which may have an impact upon the integrity of a statutory designated site for nature conservation purposes is also subject to the provisions of the Wildlife and Countryside Act 1981 (as amended) and the Habitats and Species Regulations 2010 (as amended). Under the latter, an Appropriate Assessment may be required in order for a Competent Authority to determine the significance of this impact, both from the proposed scheme and in combination with any other schemes.

Councils also have a statutory obligation under the Natural Environment and Rural Communities (NERC) Act 2006 to take into account biodiversity conservation as a material consideration in the determination of all types of planning applications. Local planning authorities therefore require relevant information from wildlife surveys in order to assess the effects on biodiversity of a proposed development.

In 2007, the UK list of conservation priority species and habitats was fully revised taking into account emerging priorities, conservation successes, and information gathered in the past decade. The list now contains 1150 species and 65 habitats that have been listed as priorities for conservation action under the UK Biodiversity Action Plan (UKBAP). The framework for conserving biodiversity is currently laid out in 'Biodiversity 2020: A Strategy for England's Wildlife and Ecosystem Services'.

Local Biodiversity Action Plans (LBAPs) have been produced for every county in the UK. These LBAPs highlight local biodiversity issues, with specific action plans being implemented for priority habitats and species where they occur.

It is essential that any ecological assessment of a proposed development site addresses the possibility of protected species being present within or around The Site, along with any potential impacts of the proposed scheme on statutory designated sites. Such an assessment would enable a developer to demonstrate due diligence in its responsibilities to protect legally protected species and habitats.

It would, however, be unreasonable for an ecological assessment to survey for every protected species. Any such assessment should therefore be based upon the results of a habitat survey and the associated possibility or likelihood of protected species being present.

Legal implications for species considered pertinent to the proposed development are discussed below.

### **Bats**

2.3.13 All species of British Bat are listed under Schedule 5 of the Wildlife and Countryside Act 1981 (as amended), and are therefore afforded special protection. It is an offence to:

Intentionally kill, injure or take any wild Bat;

Intentionally damage, destroy or obstruct access to any place that a wild Bat uses for shelter or protection; and

Intentionally or recklessly disturb any wild Bat while it is occupying a structure or place that it uses for shelter or protection.

Bats are further protected under the Habitats Regulations which make it an offence to:

Capture or kill a Bat;

Significantly disturb a Bat (in any location); and

Damage or destroy a breeding site or resting place of any Bat.

### **Badger**

The Badger *Meles meles* is widespread and Common in many parts of the UK and as such is not considered a conservation priority in the UK, but animals are fully protected under animal cruelty legislation (the Protection of Badgers Act 1992), under which it is illegal to wilfully kill, injure or take a Badger. Their setts are also protected against obstruction, destruction or damage and the animals inside cannot be disturbed without a licence from Natural England.

### **Dormouse**

Dormice are protected under The Conservation of Habitats and Species Regulations 2017 (as amended) (which replaces the 1994 Regulations). The Regulations make it an offence, with very few exceptions, to:

Deliberately capture, injure or kill a Dormouse;

Deliberately disturb a Dormouse in such a way as to be likely:

- i. to impair its ability to survive, to breed or reproduce, or to rear or nurture its young; or
- ii. to impair its ability to hibernate or migrate; or
- iii. to affect significantly the local distribution or abundance of the species to which they belong.

Damage or destroy a breeding site or resting place of a Dormouse; and

Keep, transport, sell or exchange, or offer for sale or exchange, any live or dead Dormouse, or any part of, or anything derived from such an animal or plant.

In addition to the protection given to dormice under The Conservation of Habitats and Species Regulations 2017 (as amended) already described, the Dormouse is also partially protected in Wales under the Wildlife and Countryside Act, which adds the following offences (with certain exceptions):

Disturbance while it is occupying a structure or place which it uses for shelter or protection; or

Obstructing access to any structure or place used for shelter or protection.

The Dormouse is also incidentally protected by The Hedgerow Regulations (1997), the aim of which is to prevent the removal of 'important' hedgerows which includes those which support



Schedule 5 species of the WCA 1981. If dormice are known to be using the hedgerows or to have done so within the last 5 years, then they are afforded some protection.

If proposed work could cause killing, injury or disturbance to either of dormice or damage to their habitats, appropriate mitigation which seeks to avoid these impacts should be devised and implemented under licence. Licences for 'scientific or educational', 'ringing or marking' and 'conservation' may be issued by Natural Resources Wales, licences for the reason of 'preserving public health or public safety' by the Welsh Assembly Government (WAG).

### **Birds**

All wild birds, their nests and eggs are, with few exceptions, protected under the Wildlife and Countryside Act 1981 (as amended). Over eighty species or groups of species are listed under Schedule 1 of the Act, which confers special protection with increased penalties for offences committed. Additional protection is provided to species listed under Directive 2009/147/EC on the conservation of wild bird (the 'Birds Directive') codified version. Following recent revisions, fifty-nine species are now listed on the UKBAP.

### **Amphibians and Reptiles**

All native amphibian and reptile species within the UK receive some legal protection through the Wildlife and Countryside Act 1981 (as amended). Certain species are also protected under the Habitats Regulations; these species are often referred to as European Protected Species (EPS) and receive further stringent protection. There are effectively three levels of protection for native amphibians and reptiles in the UK:

**Full Protection** – The great crested Newt *Triturus cristatus*, natterjack toad *Epidalea calamita*, sand Lizard *Lacerta agilis* and smooth Snake *Coronella austriaca* are 'fully protected', all elements of Section 9 of the Wildlife and Countryside Act apply, as does Regulation 39 of the Habitats Regulations 2010. The Act and Regulations include provisions making it an offence to:

Deliberately or intentionally kill, injure or take;

Intentionally or recklessly damage or destroy and breeding site or place used for shelter or protection;

Intentionally or recklessly obstruct access to a place used for shelter or protection;

Deliberately or recklessly disturb an animal while occupying a structure or place which it uses for that purpose;

Deliberately take or destroy eggs; and

Keep, transport, sell or exchange. It is an offence to possess or control any live or dead specimen or anything derived from such an animal.

**Protection against killing, injuring and sale** – This applies to Common Lizard *Zootoca vivipara*, slow worm *Anguis fragilis*, grass Snake *Natrix natrix* and Adder *Viper berus*. These species are afforded protection under the Wildlife and Countryside Act 1981 (as amended). Part of sub-section 9(1) and all of sub-section 9(5) apply; these prohibit the intentional killing and injuring as well as trade. There is no protection afforded to the resting places of these species.

**Protection against sale only** – This applies to smooth Newt *Lissotriton vulgaris*, Palmate Newt *Lissotriton helveticus*, Common frog *Rana temporaria* and Common toad *Bufo bufo*.

These species are only afforded protection under Section 9(5) of the Wildlife and Countryside Act 1981 (as amended), prohibiting the sale, barter, exchange, transporting for sale or advertising to sell or buy.

The provisions of both the Wildlife and Countryside Act 1981 and the Habitat Regulations apply to all life stages of the protected species; eggs, juveniles and adults.

DRAFT

## Appendx XIII. Stepwise table

Receptor	DECCA assessment of impacts on habitats and species (black text compliant / red text non-compliant)					
	1. Avoid	2. Minimise	3. Mitigate/Restore	Compensate on Site	5. Management Plan Scope	6. Net Benefit for Biodiversity Delivered
Rhos Tonyrefail SSSI	Borders 0.66km of the eastern site boundary.	Potential for accidental pollution from hydrocarbons during construction will be mitigated through strict adherence to fuel management requirements in the CEMP.  The inherent mitigation of a 5m buffer between site and hedgerows, and 15m to woodland habitat will help to minimise disturbance to species within the SSSI.	No habitat within the protected site will be impacted by the construction or operation of the solar farm.	n/a	n/a	n/a
Llantrisant Common and Pastures SSSI	Located 0.71km from The Site boundary.	n/a	n/a	n/a	n/a	n/a
Rhiwfeilin Fawr SINC	Located 0.09km from The Site boundary.	Potential for accidental pollution from hydrocarbons during construction will be mitigated through strict adherence to fuel management requirements in the CEMP.	n/a	n/a	n/a	n/a
Y Gweria Pasture Wildlife Trust Reserve	Located 1.59km from The Site boundary.	n/a	n/a	n/a	n/a	n/a
Acid grassland	2.08ha of acid grassland lie within The Site boundary, though have been excluded from any development and construction activities.	n/a	n/a	n/a	All areas of existing acid grassland are to be managed under a conservation grazing regime using sheep, with the aim to manage existing Acid Grassland. To protect ground nesting birds from livestock disturbance, grazing in these areas will be paused from April to August inclusive. To maintain an average annual grazing pressure of 0.5 LU per hectare, a higher stocking rate will be used during the permitted grazing period.  Once every three years, cutting will be required in September to limit the spread of rushes.	The sheep grazing regime proposed for areas of connected grassland outside the security fence, including the acid grassland, is expected to improve the condition of this habitat over time.
Transitional grassland & poor semi-improved grassland	0.52ha of transitional grassland to be overshadowed by solar panels & 0.1ha to be replaced with maintenance tracks and equipment hardstanding.  3.5ha of poor semi-improved grassland to be overshadowed by solar panels & 0.45ha to be replaced with maintenance tracks and equipment hardstanding.	All areas of existing grassland that fall within the ecological buffer zones (5m for hedgerows & watercourses, 15m for woodland) will be protected during construction and operations.  Grassland between and outside the panel rows will not be developed, and may only experience temporary disturbance during construction.	Low-pressure tracked vehicles are to be used to minimise rutting and soil disturbance. Operations are to cease during extended periods of heavy rainfall.  A system of traffic control is to be implemented to reduce vehicle movements and avoid unnecessary impact to grassland/fungi.	n/a	Aside from small isolated areas that will be managed with mechanical cutting, the majority of existing transitional grassland is to be managed under a conservation grazing regime using sheep, with the aim to restore historic Acid Grassland. The average annual grazing density is to be maintained at 0.5 Livestock Units (LSU) per hectare.  Once every three years, cutting throughout all grazed grassland will be required in September to limit the spread of rushes	The management of grassland within the solar farm through extensive grazing is likely to maintain and may improve the quality of the transitional and semi-improved Grassland over time. The stocking density of sheep is designed to maintain the sward to a height that promotes Acid Grassland, and this may gradually contributing to restoring this historic habitat.

Receptor	DECCA assessment of impacts on habitats and species (black text compliant / red text non-compliant)					
	1. Avoid	2. Minimise	3. Mitigate/Restore	Compensate on Site	5. Management Plan Scope	6. Net Benefit for Biodiversity Delivered
Native Hedgerows	Removal of small sections of hedgerow may be required to widen existing field entrances.	Security fencing is to be installed at a minimum of 5m from any hedgerows, leaving an undisturbed grassland buffer. In very localised areas the fence will be required to cross hedgerows and enter into the 5m zones.	In cases where the security fence needs to pass through hedge sections access points need widening, a method statement will be prepared to detail appropriate mitigations.	Any removal of small sections of hedgerow will be fully compensated by the planting of 0.2km of new Hazel hedgerows and infilling all existing hedgerow gaps with Hazel whips.	New hazel hedgerows (once established), and the existing hedgerows throughout The Site are to be allowed to grow to a height of 3-4m and a width of 3-4m, cut every 2-3 years on rotation in winter to promote blossoming and fruiting.	If any hedgerow removal is required, it would be very minimum compared with the 0.2km of new native hedgerows proposed. Therefore the project is expected to deliver a measurable net gain for hedgerows.
Woodland	Setbacks of 15m will be established from all woodland edges throughout The Site and protected with fencing during construction.	n/a	n/a	n/a	n/a	n/a
Badger	No evidence of Badger was found during biodiversity surveys. Inherent buffer zones are to be established around all suitable badger sett habitats.	A pre-construction Badger survey will be undertaken a maximum of 1 month prior to construction commencing. If active setts or burrows are found within The Site or within 30m of The Site boundary, protective buffers will be instated; and no construction activities or habitat removal will take place within these buffers. The precise width of the buffers would be assessed on the basis of the specifics of the sett/burrows and their location within The Site, with acceptance by the LPA.	n/a	n/a	n/a	No specific benefits for Badgers
Otter	No evidence of Otter has been found thusfar during biodiversity surveys. The proposed 5m buffer from ditches and field drains should minimise direct impacts to Otter habitat during construction	Existing watercourse crossing points will be used by construction traffic and where possible to minimise impacts to ditches and associated species.	n/a	n/a	n/a	n/a
Hazel Dormouse	Removal of small sections of hedgerows may be required to widen existing field entrances. All intact hedgerows are considered potentially suitable for supporting Dormice.	Inherent mitigations include no plans for hedgerows or trees to be removed as part of this development. If any hedgerows are to be removed, they should be surveyed for the presence of dormice, and appropriate action taken to protect this species should it be present. Further, a 5m buffer from all hedgerows and a 15m buffer from woodland will help to minimise impacts from noise and vibration.	Specific controls concerning the removal of hedgerows to avoid impact Dormouse are to be implemented.	n/a	Managing the hedgerows more extensively through the life of the project for improved structure and fruiting should benefit this species where present.	The planting of 0.2km of new Hazel hedgerows and infilling of existing hedgerows gaps with Hazel whips is expected to increase the available habitat for this species, thus delivering a net gain for biodiversity.
Hedgehog	No evidence of hedgehog were recorded during ecological surveys. If present on site, Hedgehogs are most likely to utilise the field margins and bases of hedgerows within The Site.	The setting back of construction 5m from hedgerows and implementing a watching brief during construction to ensure all excavations are covered and construction materials are safely stored, should minimise impacts to Hedgehogs during construction.	n/a	n/a	n/a	n/a
Foraging and commuting bats	Inherent mitigations include the buffers of 5m to the hedgerows and 15m to woodland which will avoid impacts to Bat foraging along these linear features at The Site's boundaries.	Artificial lighting will be restricted to the laydown areas and will be directional, so the impacts should be temporary and limited to a small area of The Site.	n/a	n/a	Managing the hedgerows more extensively through the life of the project for improved structure and fruiting should benefit bats.	The proposed grassland enhancements through conservation grazing, in addition to the planting of 0.2km of new hedgerows and infilling of existing hedgerows gaps is expected to marginally increase the available foraging habitat bats, thus delivering a net gain for biodiversity.



Receptor	DECCA assessment of impacts on habitats and species (black text compliant / red text non-compliant)					
	1. Avoid	2. Minimise	3. Mitigate/Restore	Compensate on Site	5. Management Plan Scope	6. Net Benefit for Biodiversity Delivered
Tree or hedgerow nesting birds	Panel deployment areas are outside of key (hedgerow and tree) nesting bird habitat although some minor losses of hedgerow sections may be required.	The inherent mitigation of a 5m buffer between site and hedgerows, and 15m to woodland habitat will help to minimise disturbance, but some birds may be disturbed locally.  If any hedgerow sections are removed, surveys are to take place for hedgerow nesting birds and works are to be supervised to avoid the unlawful disturbance of birds during the nesting season.	n/a	n/a	All new and existing hedgerows throughout The Site are to be allowed to grow to a height of 3-4m and a width of 3-4m, cut every 2-3 years on rotation in winter to promote blossoming and fruiting. These management plan will maintain and improve the quality of existing hedgerows for nesting birds, and avoid disturbance during the breeding season.	The planting of 0.2km of new Hazel hedgerows and infilling of existing hedgerows gaps with Hazel whips is expected to increase the available habitat for hedgerow nesting birds, thus delivering a net gain for biodiversity.
Wintering birds (wildfowl and waders)	No target wintering birds (i.e., waders and wildfowl) were observed within the deployment area.	The inherent mitigation of a 5m buffer between site and hedgerows, and 15m to woodland habitat will help to minimise disturbance, but some birds may be disturbed locally.	n/a	n/a	n/a	No specific benefits for target wintering birds.
Reptiles	No reptiles were found within The Site during ecological surveys. Reptiles unlikely to be present in core deployment zones due to existing grassland management.	Controls to protect reptiles from death, disturbance, injury or entrapment during construction are to be implemented.	n/a	n/a	Conservation grazing regime is expected to improve the grassland habitats for reptiles.	Enhancing existing grassland throughout The Site, planting new hedgerows, and installing log piles are expected to improve The Site for reptiles, delivering a net benefit for biodiversity.
Amphibians	No amphibians were found within The Site during ecological surveys. Reptiles unlikely to be present in core deployment zones due to existing grassland management.	Controls to protect amphibians from death, disturbance, injury or entrapment during construction are to be implemented.	n/a	n/a	n/a	Enhancing existing grassland throughout The Site, planting new hedgerows, and installing log piles are expected to improve The Site for amphibians, delivering a net benefit for biodiversity.
Notable Fungi	Butter Waxcap, Heath Waxcap and Meadow Waxcap were all identified within the deployment area (restricted to Field 1).	Solar deployment spacing allows retained grassland areas to remain suitable for a range of grassland fungi.  Low-pressure tracked vehicles are to be used to minimise rutting and soil disturbance. Operations are to cease during extended periods of heavy rainfall.  A system of traffic control is to be implemented to reduce vehicle movements and avoid unnecessary impact to grassland/fungi.	n/a	n/a	Aside from small isolated areas that will be managed with mechanical cutting, the majority of existing transitional grassland is to be managed under a conservation grazing regime using sheep, with the aim to restore historic Acid Grassland. The average annual grazing density is to be maintained at 0.5 Livestock Units (LSU) per hectare.  Once every three years, cutting throughout all grazed grassland will be required in September to limit the spread of rushes	The proposed grassland enhancement management plan will ensure that overall, the extent of high quality grassland suitable for a range of fungi increases overall